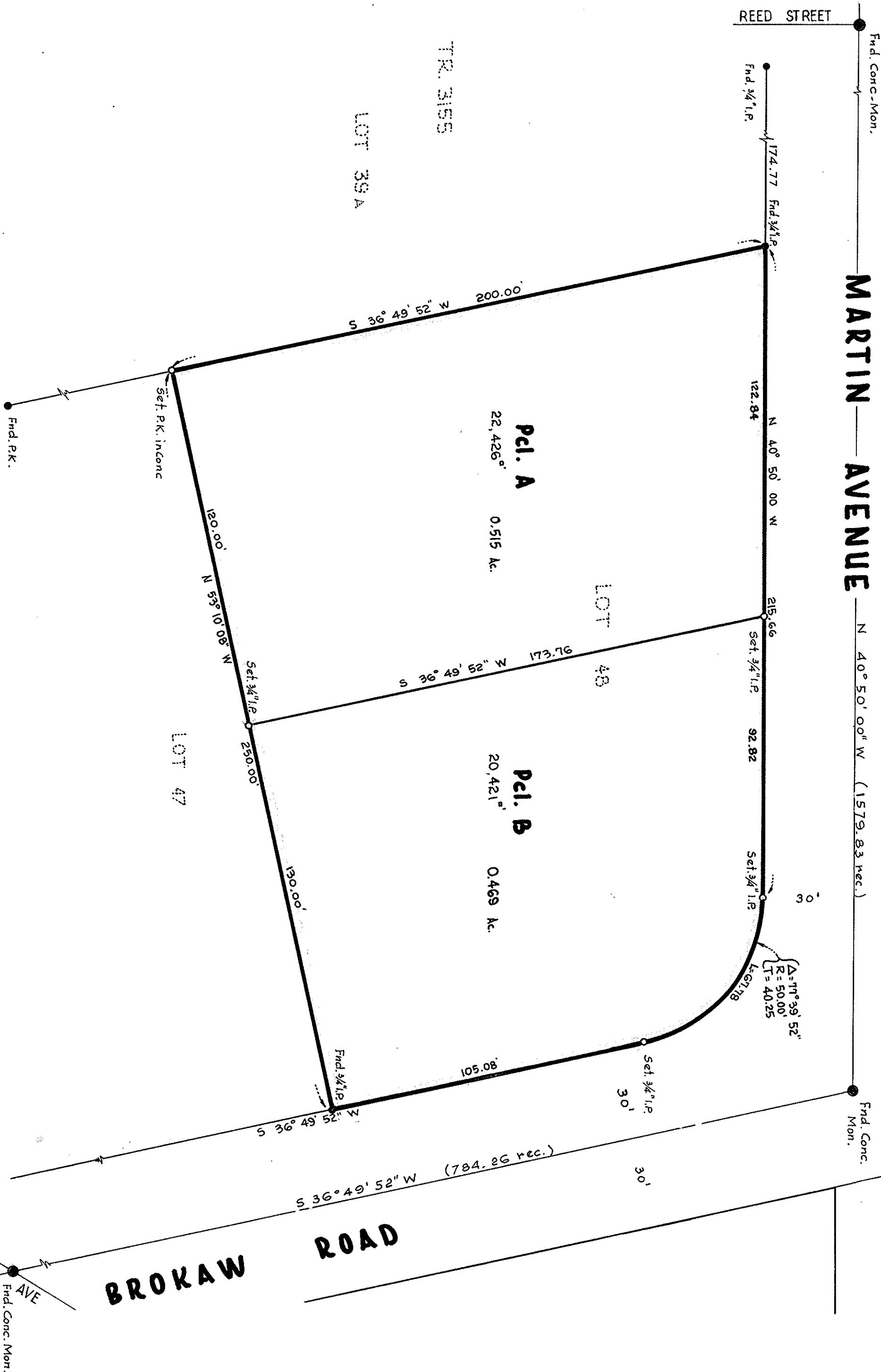


CITY OF SAN JOSE AIRPORT

MARTIN AVENUE



BASIS OF BEARINGS

The bearing of the centerline of Martin Avenue (N 40° 50' 00\"W) as shown on map of Tract No. 3155, recorded in Book 147 of Maps, at Page 28, 29 & 30 Santa Clara County Recorders Office was used as the basis of bearings.

SURVEYOR'S CERTIFICATE

This map was prepared by me or under my direction and is based upon a field survey in conformance with the requirements of the Subdivision Map Act at the request of Don Francis, Holmes in August 1967. I hereby certify that it conforms to the approved tentative map and the conditions of approval thereof, that all provisions of applicable state law and local ordinance have been complied with.

John Jay Brown
JOHN JAY BROWN
Reg. Civil Engr. No. 12308

CITY ENGINEER'S CERTIFICATE

This map has been examined in 1967, for conformance with the requirements of Section 11575 of the Subdivision Map Act.

William F. Trigeiro
WM. F. TRIGEIRO
City Engr. City of Santa Clara

RECORDERS CERTIFICATE

Filed for record this 21st day of SEPT. 1967 at 3:13 P.M. in Book 228 of Maps at Page 36 at the request of John Jay Brown

By deputy *George E. Fowles*
GEORGE E. FOWLES
County Recorder

PARCEL MAP

LOT 48
TRACT NO. 3155
AIRPORT INDUSTRIAL PARK
CITY OF SANTA CLARA, CALIFORNIA

MISSION ENGINEERS
1555 LAFAYETTE ST.
JOHN JAY BROWN
SCALE 1\"= 30'
CIVIL ENGINEER
AUGUST 1967
JOB NO. H 0741
DWG. NO. M 3923