

RECORD OF SURVEY NO. 32-9

LOCATED IN THE NW 1/4 OF THE NE 1/4 OF
SEC 4, T4N, R25E, MDB&M.

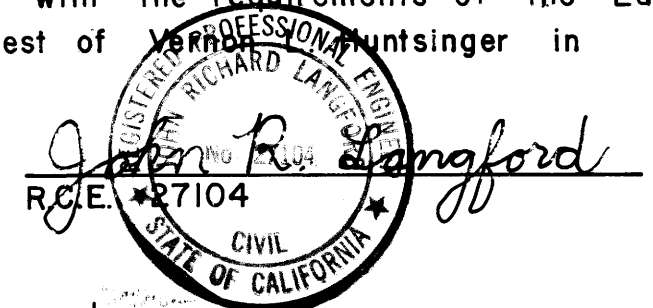
RECORDER'S CERTIFICATE

Filed this 22nd day of OCTOBER, 1979,
at 2:17 P.m. in Book L of Record of Survey
Maps at page 45, at the request of
Vernon L. Huntsinger.
*3298

County Recorder

SURVEYOR'S CERTIFICATE

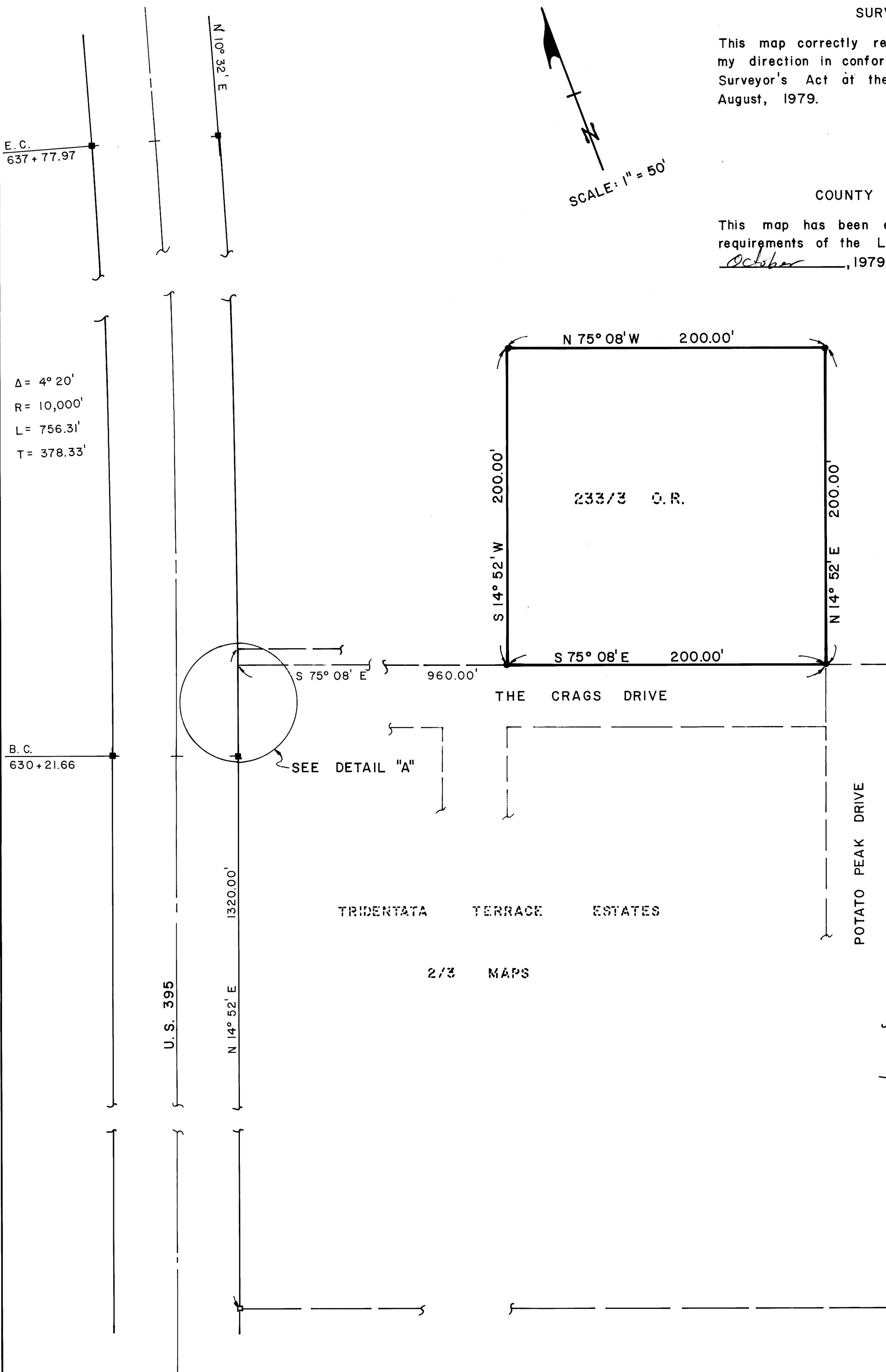
This map correctly represents a survey made by me or under
my direction in conformance with the requirements of the Land
Surveyor's Act at the request of Vernon L. Huntsinger in
August, 1979.



COUNTY SURVEYOR'S CERTIFICATE

This map has been examined for conformance with the
requirements of the Land Surveyor's Act this 23rd day of
October, 1979.

Richard L. Cool, P.E.
County Surveyor



Basis of Bearings:

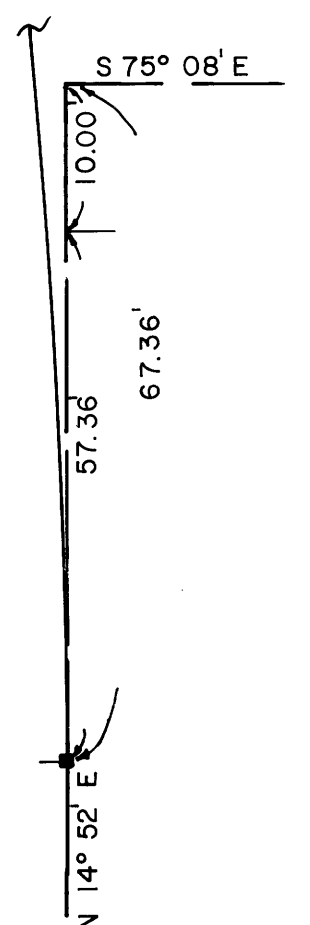
N 14° 52' E, the Westerly boundary
line of Tridentata Terrace Estates
Subdivision recorded in Bk. 2, Pg. 3
of maps.

Legend:

- Indicates found Cal Trans concrete highway monument.
- Set 2x2 hub & tack.
- Set 1" iron pipe & tag R.C.E. 27104.

B.C. 630+21.66

DETAIL "A"
No Scale



R/S Vol I Page 45