

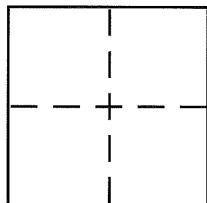
CORNER RECORD

City of BERKELEY

Brief Legal Description MONUMENT B2616, B2617

Document Number CR 3868

County of ALAMEDA, California



CORNER TYPE

Government Corner ☐ Control ☒
Meander ☐ Property ☐
Rancho ☐ Other ☐
Date of Survey 7-25-09

COORDINATES (Optional)

N. _____
E. _____
Zone _____ NAD27 ☐ NAD83 ☐
NAD83 Epoch _____
Elev. _____
Vert. Datum: NGVD29 ☐ NAVD88 ☐
Meas. Units: Metric ☐ Imperial ☐

Corner - Left as found ☒ Found and tagged ☐ Established ☐ Reestablished ☐ Rebuilt ☐

Identification and type of corner found: Evidence used to identify or procedure used to establish or reestablish the corner:

CITY MONUMENT REFERENCES, SEE PAGE 2

A description of the physical condition of the monument as found and as set or reset:

SEE PAGE 2

SURVEYOR'S STATEMENT

This Corner Record was prepared by me or under my direction in conformance with the Land Surveyor's Act on JULY 31, 2009

Signed [Signature] P.L.S or R.C.E. No. PLS 5003

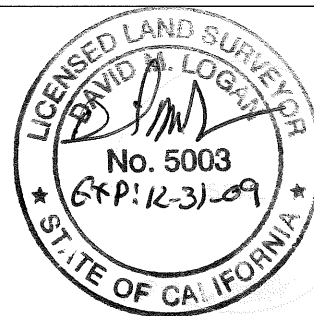
COUNTY SURVEYOR'S STATEMENT

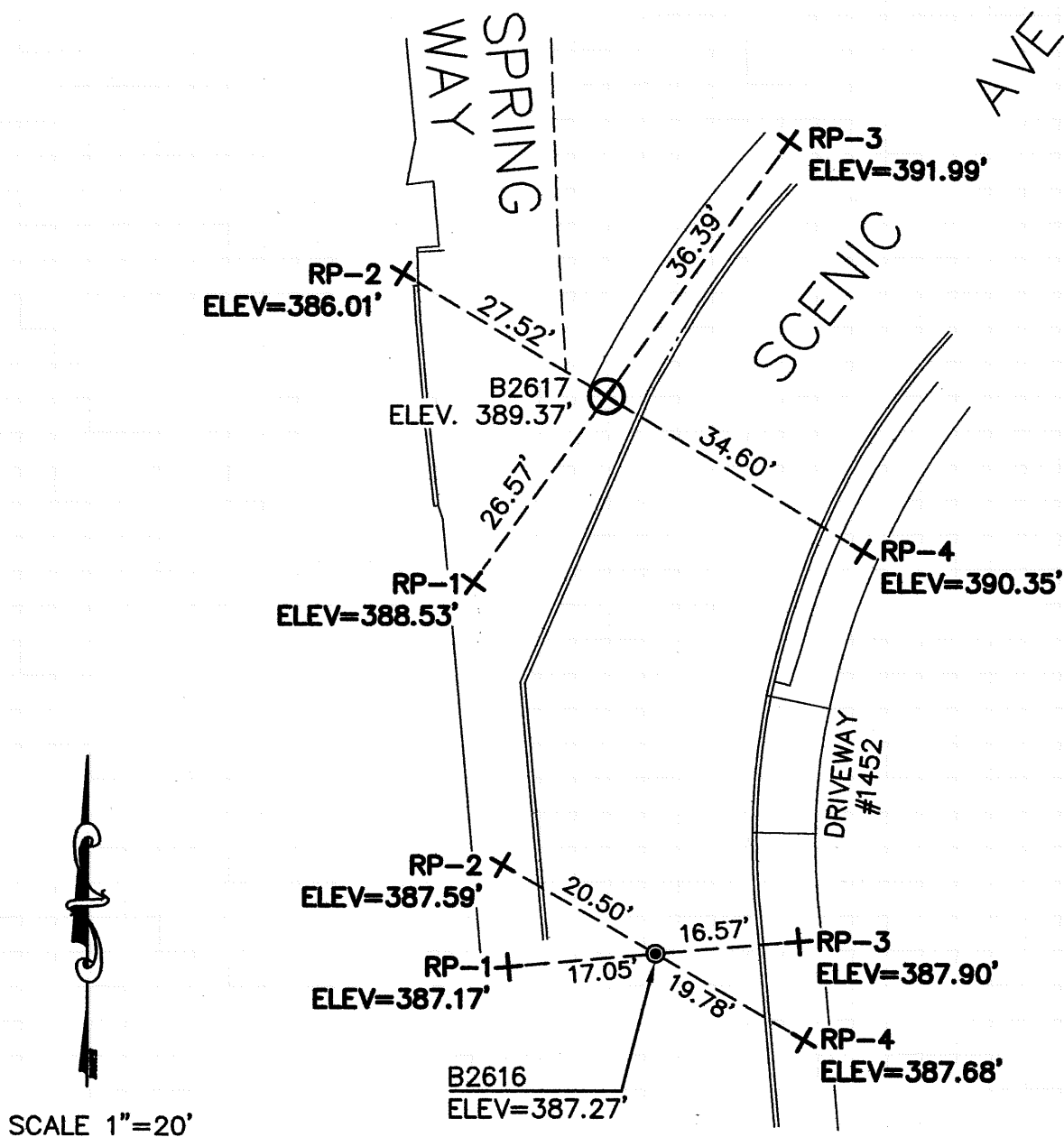
This Corner Record was received 8-18-09
and examined and filed 9-9-09

Signed [Signature] P.L.S or R.C.E. No. 5726

Title COUNTY SURVEYOR

County Surveyor's Comment _____





LEGEND

- STANDARD WELL-TYPE CITY MONUMENT WITH BRASS DISC WITH PUNCH.
- ⊗ MONUMENT - CROSS ON SIDEWALK
- + REFERENCE CROSS ON SIDEWALK

NOTE:

THE EXISTING MONUMENT AS SHOWN IS REFERENCED BY STRAIGHT LINES BETWEEN RP-1 TO RP-3 AND RP-2 TO RP-4.