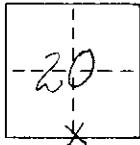


# CORNER RECORD

COUNTY OF Monro T. 1N R. 27E  MDB E MERIDIAN CALIFORNIA

CORNER TYPE: GOV'T. CORNER ☒ MEANDER ☐ RANCHO ☐ CONTROL ☐ OTHER ☐

CORNER IDENTIFICATION - DATE OF VISIT Sept 2 19 77



CORNER - LEFT AS FOUND ☒ FOUND AND TAGGED ☐ REESTABLISHED OBLITERATED CORNER ☐ REBUILT ☐

PHYSICAL DESCRIPTION OF CORNER FOUND: EVIDENCE AND METHOD USED TO IDENTIFY OR REESTABLISH Fe 1000  
pipe, 40 0.2, in loose round of 12 1/2" with 1 1/2" x 6" = pipe  
12 1/2" x 27 side. Fe 1000 - wood plug with tack and tag 10467  
in it

PHYSICAL DESCRIPTION OF MONUMENTS REBUILT OR PERPETUATED

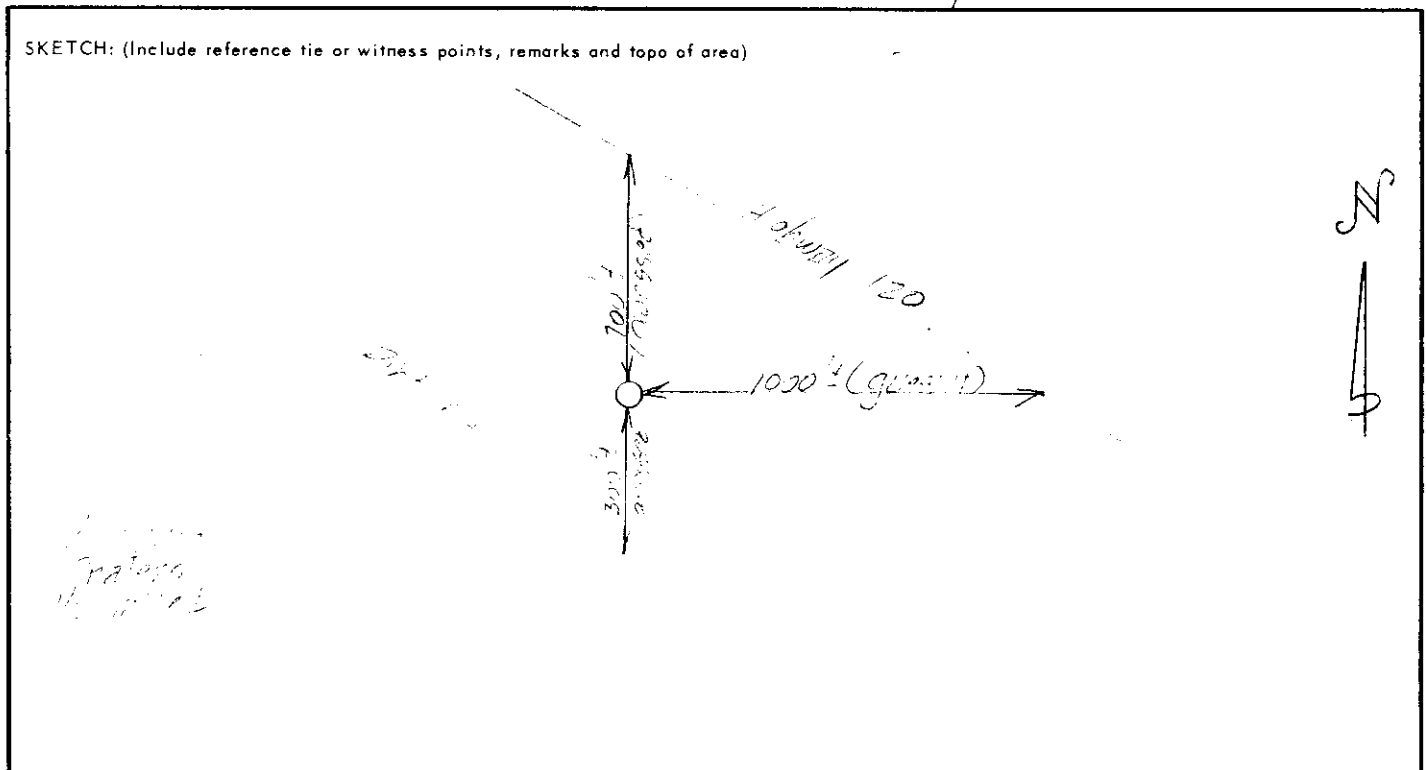
Fe 1000 - Fe 1000 - North at Mon; Fe 1000 - NE at Mon;  
Fe 1000 - Fe 1000 - WSW at Mon

CALIFORNIA COORDINATE SYSTEM ORDER: FIRST ☐ SECOND ☐ THIRD ☐

STATIONS USED: NGS (USC & GS) ☐ STATE ☐ COUNTY ☐ OTHER ☐ STATION \_\_\_\_\_ STATION \_\_\_\_\_

ZONE \_\_\_\_\_ ELEVATION \_\_\_\_\_ NORTHINGS (Y) \_\_\_\_\_ EASTINGS (X) \_\_\_\_\_

SKETCH: (Include reference tie or witness points, remarks and topo of area)



## SURVEYOR'S CERTIFICATE

THIS CORNER RECORD WAS PREPARED BY ME OR UNDER MY DIRECTION IN CONFORMANCE WITH THE LAND SURVEYORS ACT ON Sept 2 19 77

SIGNED: [Signature]

L.S. or R.C.E. No.: [Signature]

SEAL

## COUNTY SURVEYOR'S CERTIFICATE

THIS CORNER RECORD WAS RECEIVED \_\_\_\_\_ 19 \_\_\_\_\_ AND EXAMINED AND FILED \_\_\_\_\_ 19 \_\_\_\_\_

BY: \_\_\_\_\_

TITLE: \_\_\_\_\_

DOCUMENT No. 111 27-20-1

STATEMENT ON BACK OF SHEET

YES ☐ NO ☐