

General Information

Location: Latacunga Ecu
IATA Code: LTX
Lat/Long: S00° 54.4000' W078° 36.9500'
Elevation: 9207 ft

Airport Use: Public
Magnetic Variation: 2.6°W

Fuel Types: Jet A-1
Customs: Yes
Airport Type: IFR
Landing Fee: No
Control Tower: Yes
Jet Start Unit: No
LLWS Alert: No
Beacon: Yes

Sunrise: 1107 Z
Sunset: 2313 Z,

Runway Information

Runway: 01
Length x Width: 11946 ft x 148 ft
Surface Type: asphalt
TDZ-Elev: 9116 ft
Lighting: Edge

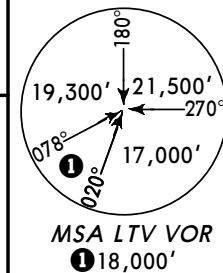
Runway: 19
Length x Width: 11946 ft x 148 ft
Surface Type: asphalt
TDZ-Elev: 9192 ft
Lighting: Edge, ALS, REIL
Displaced Threshold: 1447 ft

Communication Information

Latacunga Tower 118.5
Latacunga Ground Control 121.9

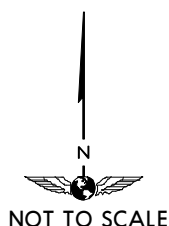
Apt Elev
9205'

Trans level: FL 150 Trans alt: 15000'



DEPARTURE 1
[DEP1]
(RWY 19)

CONDORCOCHA
D 115.3 QIT
S00 02.3 W078 30.7



D20 LTV

At or above
18000'

D12 LTV

At or above
15000'

LATAACUNGA
D 117.1 LTV
S00 55.5 W078 37.1

D2 LTV

At or above
9550'

D7 LTV

S01 02.4
W078 35.8

At or above
10800'

At or above
13200'

This SID requires the following take-off minimums:
Ceiling 300m, Visibility 4.0 km and a minimum
climb gradient of 3.3% (200' per NM).

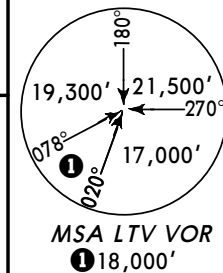
Gnd speed-KT	75	100	150	200	250	300
3.3% V/V (fpm)	251	334	501	668	835	1003

INITIAL CLIMB

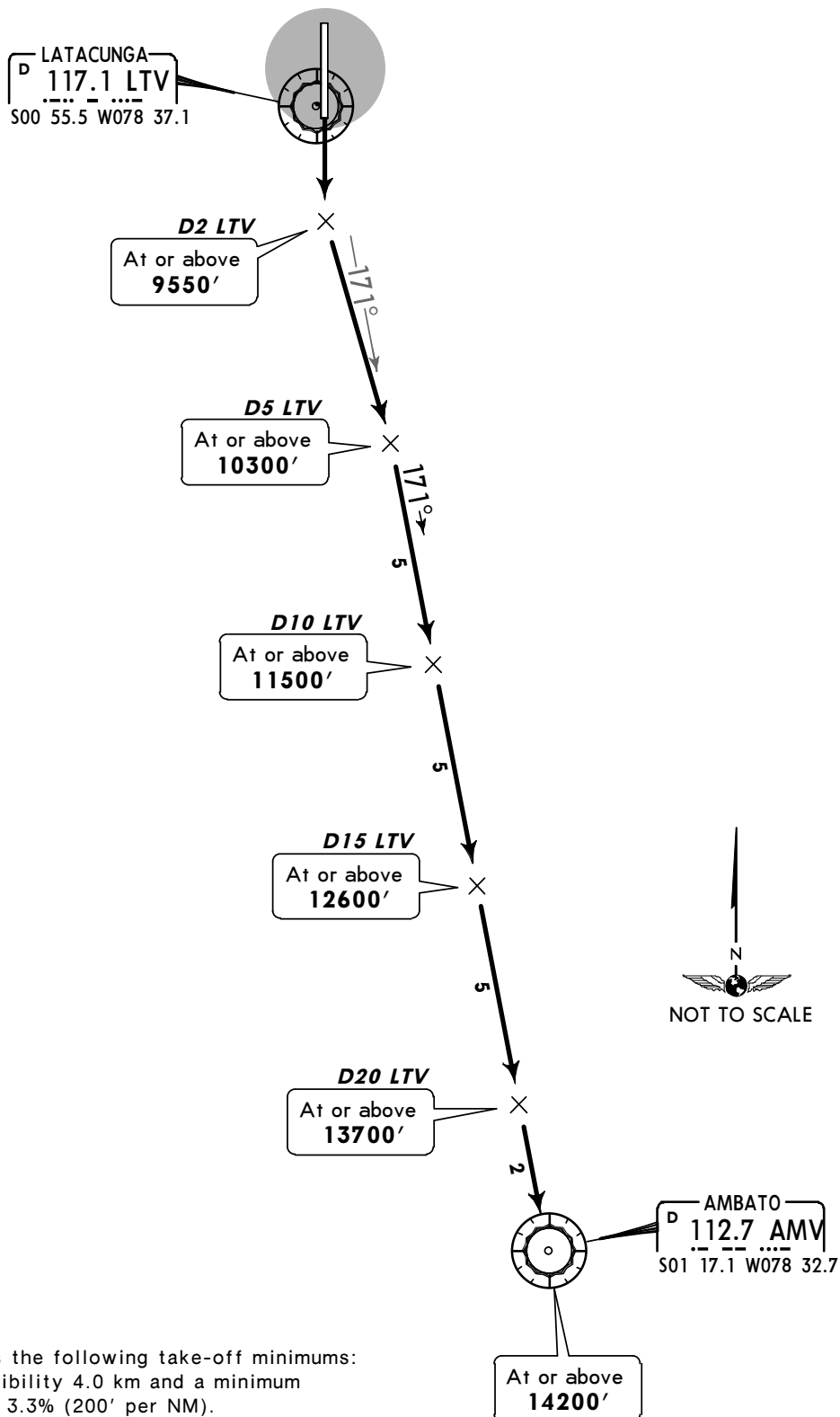
After take-off climb on runway heading to LTV 2 DME, then turn LEFT heading 167° to intercept LTV R-172 to D7 LTV, then turn RIGHT to intercept LTV R-217 (037° course) proceed direct to LTV then as instructed by ATC.

Apt Elev
9205'

Trans level: FL 150 Trans alt: 15000'



DEPARTURE 2 [DEP2] (RWY 19)



This SID requires the following take-off minimums:
Ceiling 300m, Visibility 4.0 km and a minimum
climb gradient of 3.3% (200' per NM).

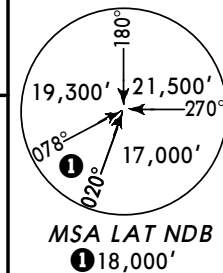
Gnd speed-KT	75	100	150	200	250	300
3.3% V/V (fpm)	251	334	501	668	835	1003

INITIAL CLIMB

After take-off climb runway heading to LTV 2 DME, then turn LEFT to intercept LTV R-171
(heading 171°) to AMV then proceed according to ATC instructions.

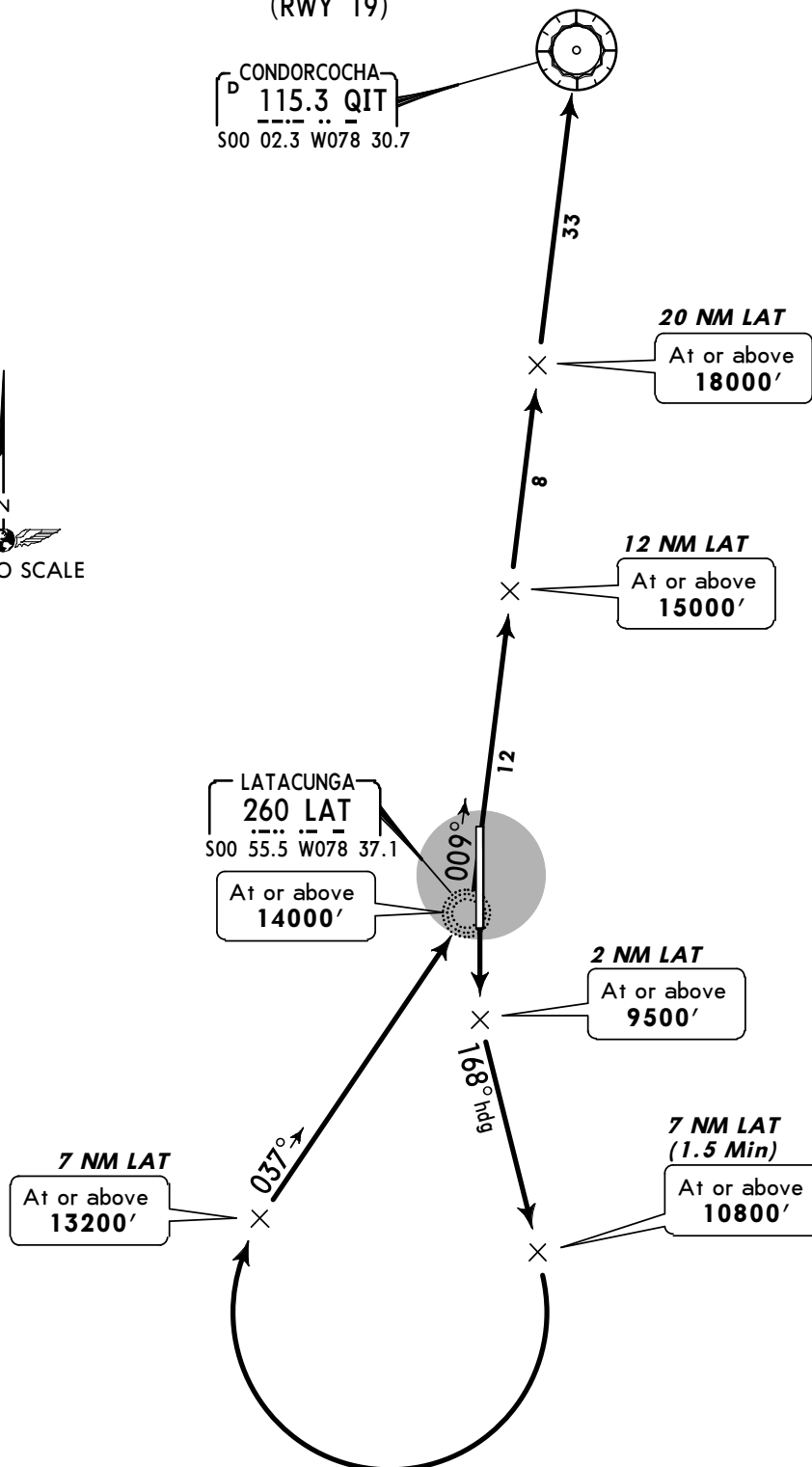
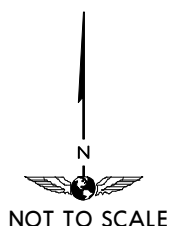
Apt Elev
9207'

Trans level: FL 150 Trans alt: 15000'



DEPARTURE 3 [DEP3] (RWY 19)

CONDORCOCHA
115.3 QIT
500 02.3 W078 30.7



This SID requires the following take-off minimums:
Ceiling 300m, Visibility 4.0 km and a minimum
climb gradient of 3.3% (200' per NM).

Gnd speed-KT	75	100	150	200	250	300
3.3% V/V (fpm)	251	334	501	668	835	1003

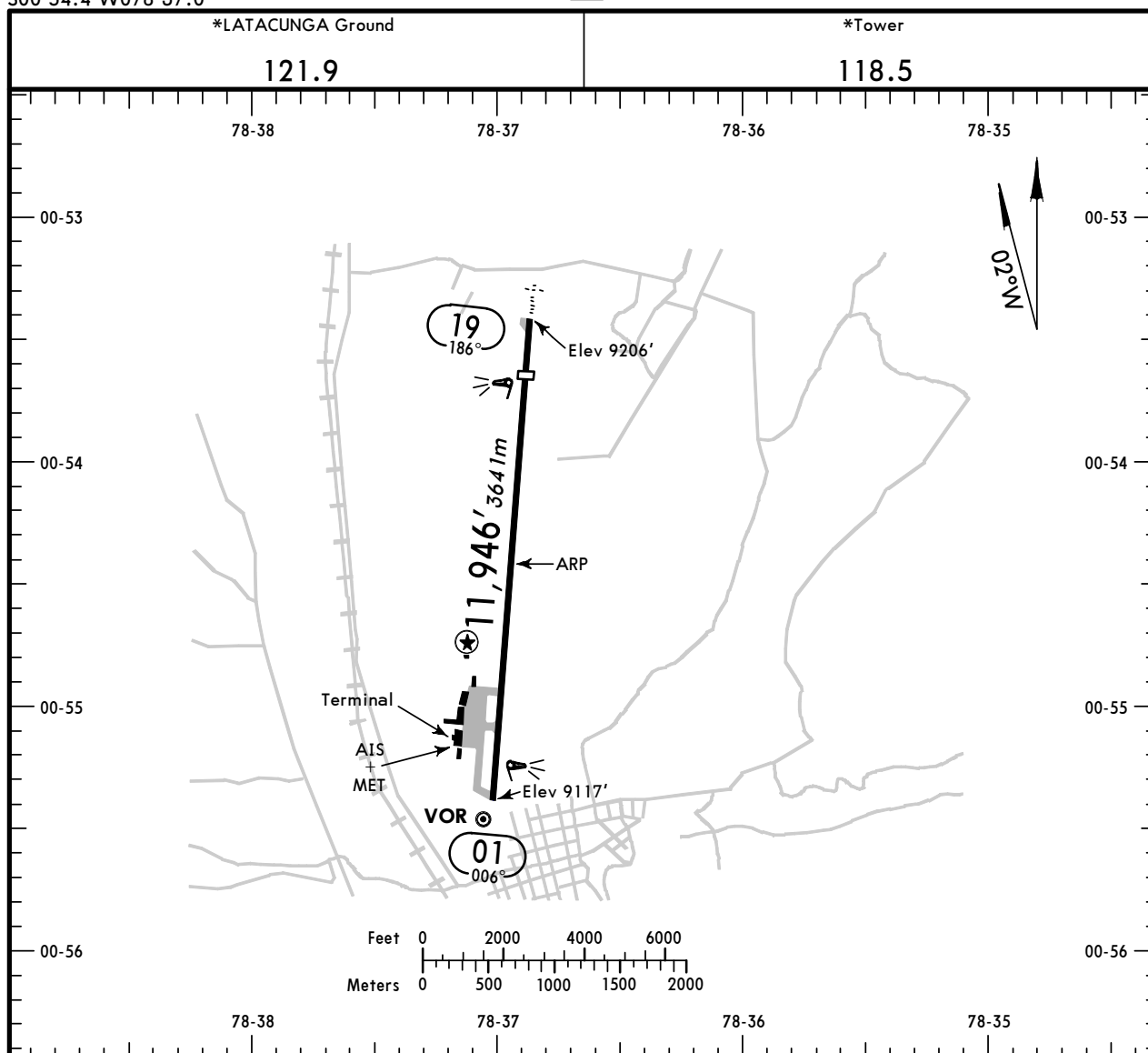
INITIAL CLIMB

After take-off MAINTAIN runway heading to 2 NM LAT, turn LEFT heading 168° to 7 NM LAT (1.5 Min), turn RIGHT to intercept LAT 037° bearing to LAT and proceed according to ATC instructions.

SELT/LTX
Apt Elev **9207'**
S00 54.4 W078 37.0

JEPPESSEN
22 JUN 12 **(11-1)** **Eff 28 Jun**

LATACUNGA, ECUADOR
COTOPAXI INTL



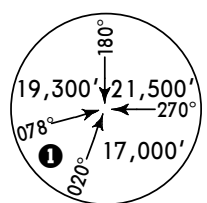
ADDITIONAL RUNWAY INFORMATION

RWY		USABLE LENGTHS		TAKE-OFF	WIDTH
		Threshold	Glide Slope		
01	RL REIL				148'
19	RL ALS REIL PAPI-L (angle 3.2°)	10,499' 3200m	9219' 2810m		45m

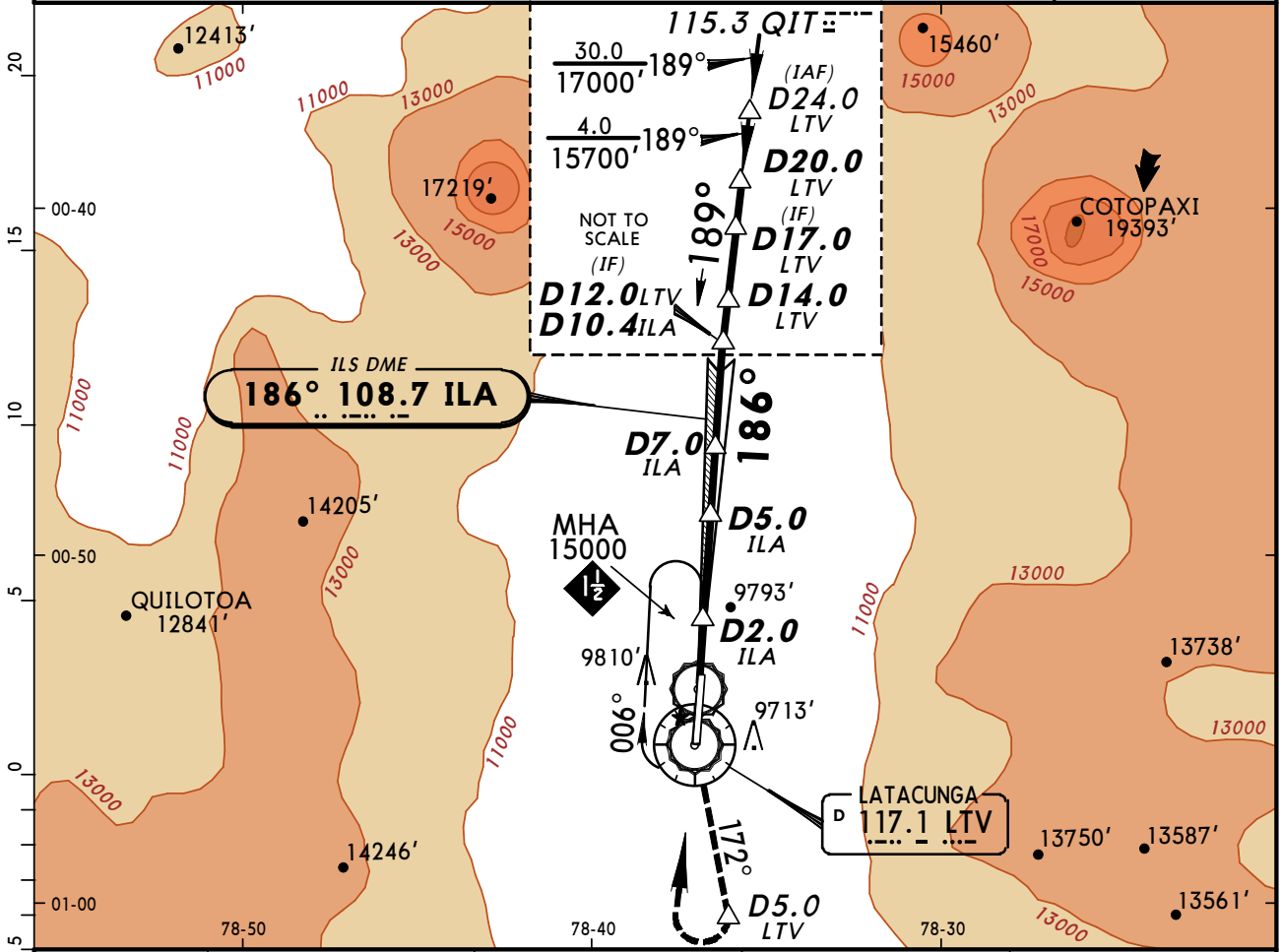
TAKE-OFF		FOR FILING AS ALTERNATE	
AIR CARRIER			
All Rwy's		Precision	Non-Precision
A	400m	A	600 - 1.5 km 800 - 1.5 km
B		B	
C		C	
D		D	

CHANGES: Ramp area, buildings added.

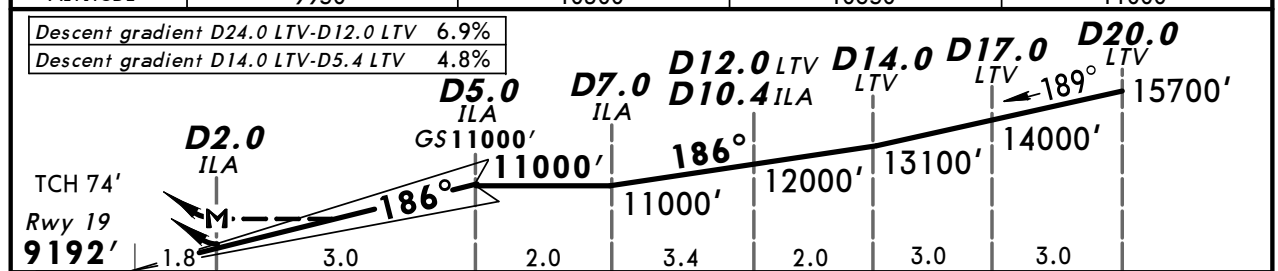
© JEPPESSEN, 1999, 2012. ALL RIGHTS RESERVED.

GUAYAQUIL Control (ACC) 128.3 119.9		QUITO Approach 119.7		*LATACUNGA Tower (APP) 118.5		*Ground 121.9	
LOC ILA 108.7	Final Apch Crs 186°	GS D5.0 ILA 11000' (1808')	ILS DA(H) 9940' (748')	Apt Elev 9207' Rwy 19 9192'			
MISSED APCH: Maintain 186° course climbing to LTV VOR R172 until D5.0 LTV and cross D5.0 LTV at or above 12000'. Turn RIGHT to LTV VOR and enter the holding pattern at 15000', or proceed in accordance with ATC instructions.							
Alt Set: hPa Rwy Elev: 294 hPa		Trans level: FL 150		Trans alt: 15000'			
1. Missed approach MAX IAS 200 Kts.							

MSA LTV VOR
18,000'



ILA DME	2.0	3.0	4.0	5.0
ALTITUDE	9950'	10300'	10650'	11000'



Gnd speed-Kts	70	90	100	120	140	160	REIL PAPI	ALS —<			

STRAIGHT-IN LANDING RWY 19						CIRCLE-TO-LAND RWY 1		
ILS			LOC (GS out)					
DA(H) 9940' (748')			MDA(H) 10300' (1108')					
FULL			ALS out			Max Kts		
A	NA			NA			A	MDA(H)
B	4.0 km			6.0 km			135	10300' (1093') - 6.0 km
C							180	11900' (2693') - 8.0 km
D							205	12500' (3293') - 8.0 km

SELT/LTX

JEPPESSEN

CAT B, C & D

LATACUNGA, ECUADOR

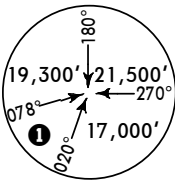
COTOPAXI INTL

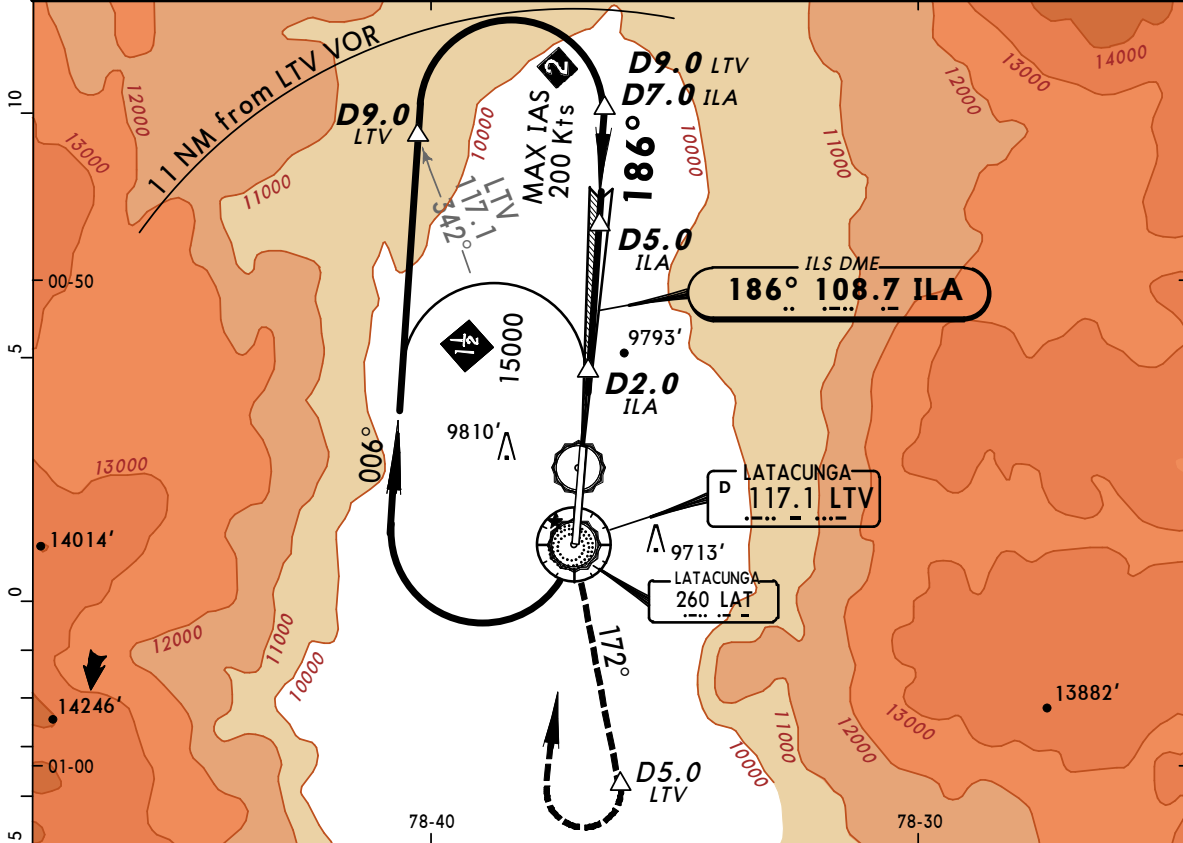
10 MAY 13

11-2

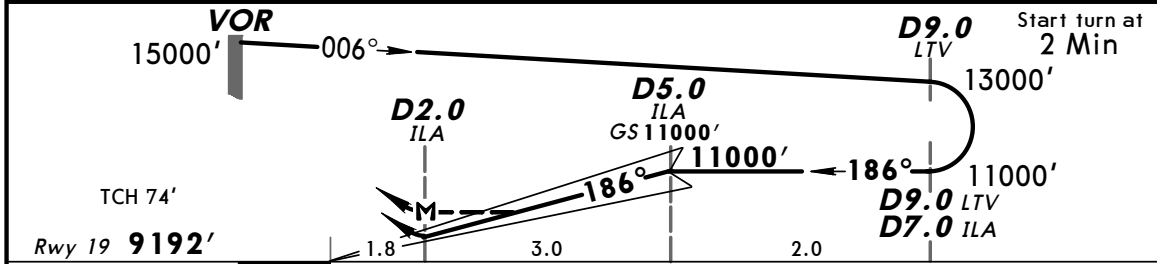
DESCENT 4 VOR DME ILS DME Rwy 19

MISSED APCH CLIMB GRADIENT MIN 4.0%

GUAYAQUIL Control (ACC) 128.3 127.95		QUITO Approach 119.7		LATACUNGA Tower (APP) 118.5		Ground 121.9
LOC ILA 108.7	Final Apch Crs 186°	GS D5.0 ILA 11000' (1808')	ILS DA(H) 9940' (748')	Apt Elev 9207' Rwy 19 9192'		
MISSED APCH: Maintain 186° course climbing to LTV VOR, then continue outbound on LTV VOR R-172 until D5.0 LTV and cross D5.0 LTV at or above 12000'. Turn RIGHT to LTV VOR and enter the holding pattern at 15000', or proceed in accordance with ATC instructions.						 <p>MSA LTV VOR 18,000'</p>
Alt Set: hPa		Rwy Elev: 294 hPa		Trans level: FL 150		Trans alt: 15000'



ILA DME	2.0	3.0	4.0	5.0
ALTITUDE	9950'	10300'	10650'	11000'

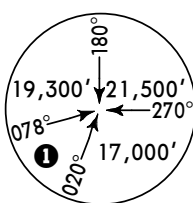


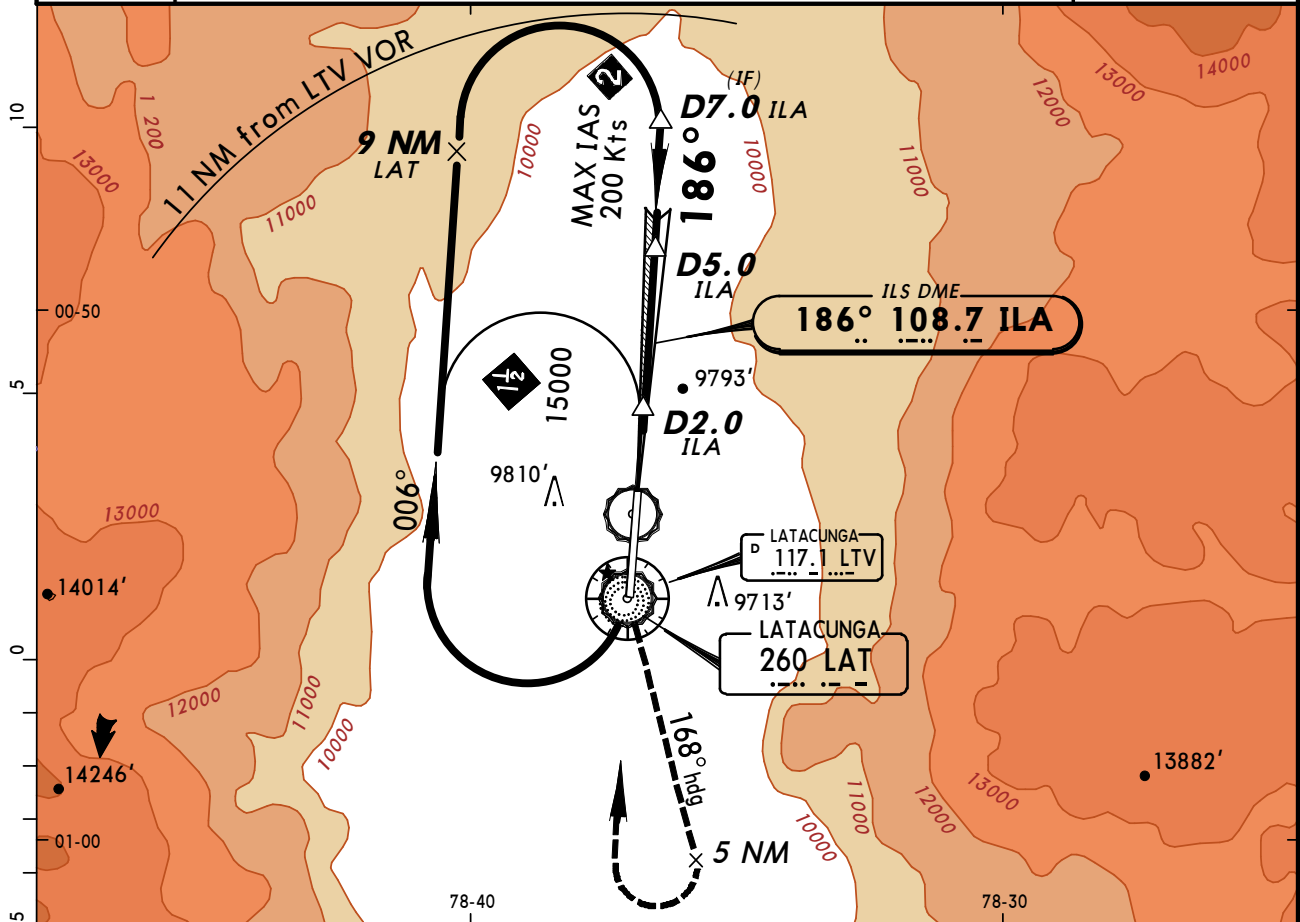
Gnd speed-Kts	70	90	100	120	140	160	ALS REIL PAPI		186°	↑	LTV 117.1
GS	3.20°	396	510	566	679	793					
MAP at D2.0 ILA or D5.0 ILA to MAP 3.0											
	2:34	2:00	1:48	1:30	1:17	1:08					

STRAIGHT-IN LANDING RWY 19						CIRCLE-TO-LAND RWY 01		
Missed apch climb gradient min 4.0%								
ILS DA(H) 9940' (748')			LOC (GS out) MDA(H) 10300' (1108')			Max Kts	MDA(H)	
ALS out			ALS out			A	NA	
A			A			135	10300' (1093') - 6.0 km	
B			B			180	11900' (2693') - 8.0 km	
C			C			205	12500' (3293') - 8.0 km	
D			D					

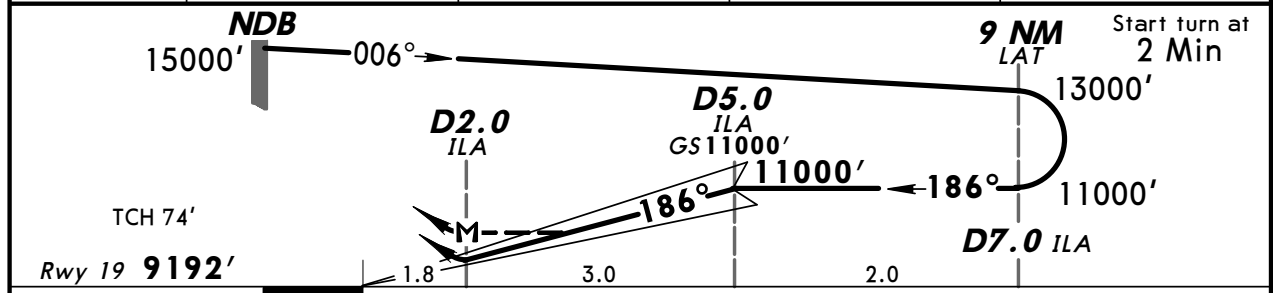
CHANGES: LAT NDB added.

© JEPPESSEN, 2000, 2013. ALL RIGHTS RESERVED.

GUAYAQUIL Control (ACC)		QUITO Approach		LATAACUNGA Tower (APP)		Ground
128.3 127.95		119.7		118.5		121.9
LOC ILA 108.7	Final Apch Crs 186°	GS D5.0 ILA 11000' (1808')	ILS DA(H) 9940' (748')	Apt Elev 9207'		
MISSED APCH: Climb on heading 186° to LAT NDB, then turn LEFT heading 168° to 12000' within 5 NM LAT NDB, then turn RIGHT to LAT NDB and hold at 15000' or proceed in accordance with ATC instruction.						
Alt Set: hPa		Rwy Elev: 294 hPa		Trans level: FL 150		
1. DME required.				Trans alt: 15000'		

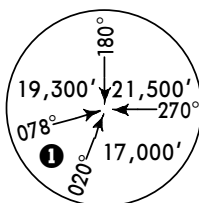


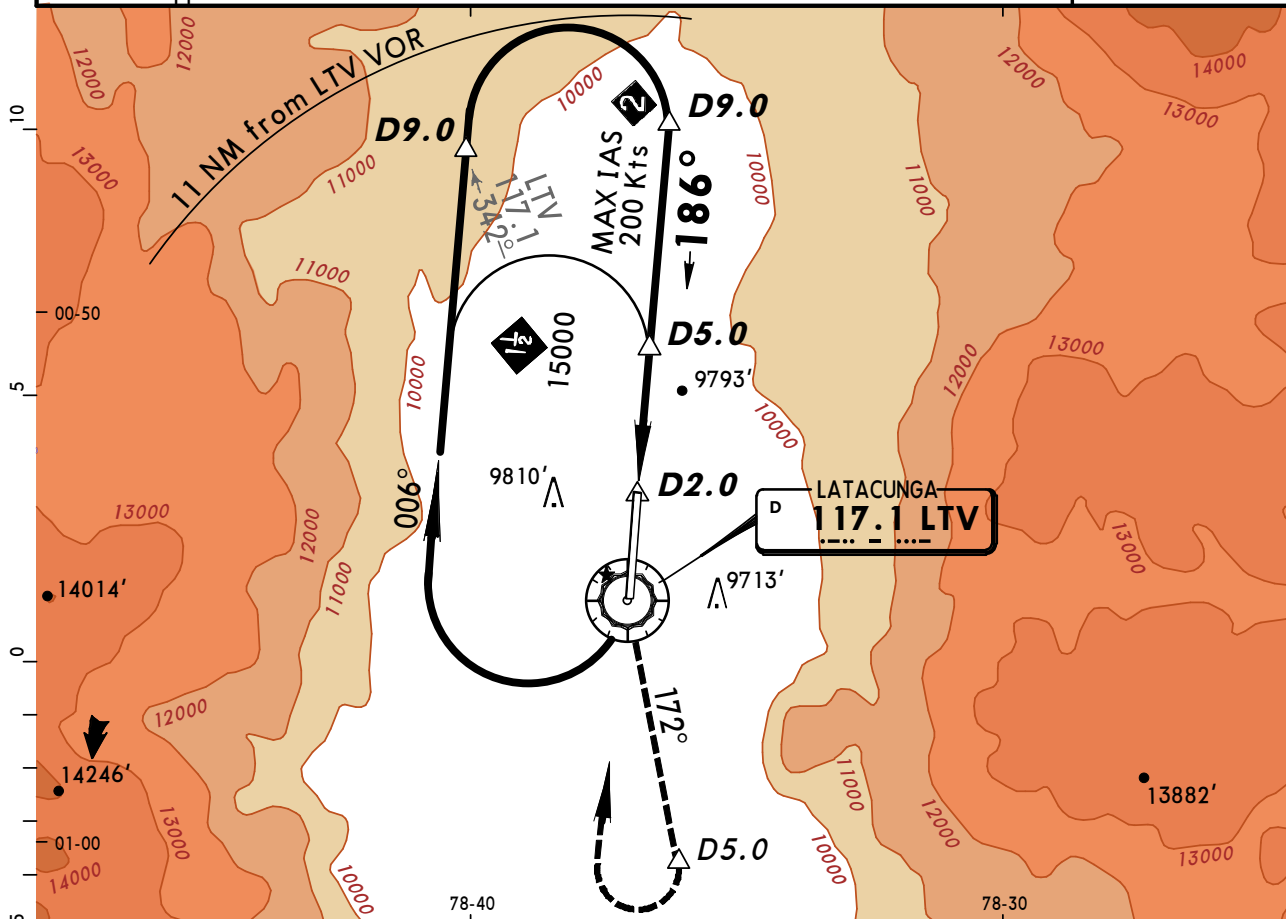
ILA DME	2.0	3.0	4.0	5.0
ALTITUDE	9950'	10300'	10650'	11000'



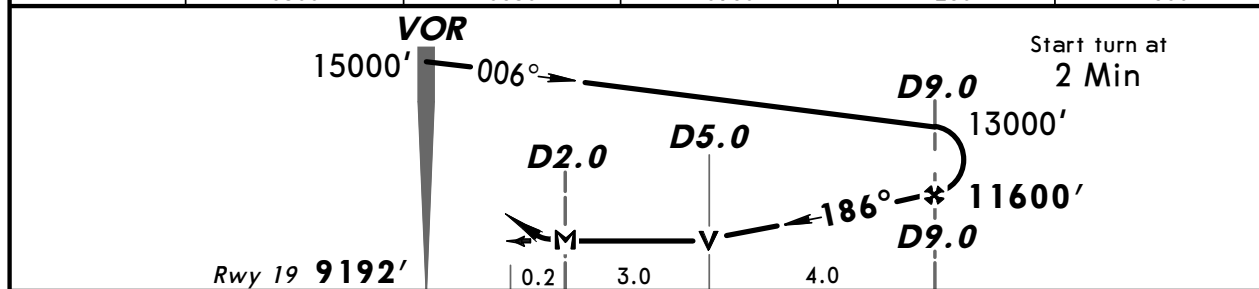
Gnd speed-Kts	70	90	100	120	140	160	<div><div>ALS</div><div>REIL PAPI</div></div>	12000'	186° hdg	LAT 260
GS 3.20°	396	510	566	679	793	906		<div>↑</div>		
MAP at D2.0 ILA or D5.0 ILA to MAP 3.0	2:34	2:00	1:48	1:30	1:17	1:08				

STRAIGHT-IN LANDING RWY 19				CIRCLE-TO-LAND RWY 01		
Missed apch climb gradient mim 4.0%						
ILS		LOC (GS out)				
DA(H) 9940' (748')		MDA(H) 10400' (1208')				
ALS out		ALS out		Max Kts	MDA(H)	
A	NA		NA		A	NA
B	4.0 km		6.0 km		135	10400' (1193') - 6.0 km
C					180	11900' (2693') - 8.0 km
D					205	12500' (3293') - 8.0 km

GUAYAQUIL Control (ACC) 128.3 127.95		QUITO Approach 119.7		LATACUNGA Tower (APP) 118.5		Ground 121.9	
VOR LTV 117.1	Final Apch Crs 186°	Minimum Alt D9.0 11600'(2408')	MDA(H) 10300'(1108')	Apt Elev 9207' Rwy 19 9192'		 MSA LTV VOR 18,000'	
MISSED APCH: Maintain 186° course climbing to LTV VOR, then continue outbound on LTV VOR R-172 until D5.0 LTV and cross D5.0 LTV at or above 12000'. Turn RIGHT to LTV VOR and enter the holding pattern at 15000', or proceed in accordance with ATC instructions.							
Alt Set: hPa Rwy Elev: 294 hPa		Trans level: FL 150		Trans alt: 15000'			
1. Missed approach MAX IAS 200 Kts.							



LTV DME	5.0	6.0	7.0	8.0	9.0
ALTITUDE	10300'	10630'	10960'	11280'	11600'



Gnd speed-Kts	70	90	100	120	140	160	ALS REIL PAPI	186°	↑	LTV 117.1
Descent Gradient 5.3%	376	483	537	644	751	859				
MAP at D2.0 or D9.0 to MAP	7.0	6:00	4:40	4:12	3:30	3:00				

STRAIGHT-IN LANDING RWY 19 Missed apch climb gradient mim 4.0% MDA(H) 10300' (1108')						CIRCLE-TO-LAND RWY 1			
ALS out						Max Kts	MDA(H)		
A	NA					A	NA		
B	6.0 km					135	10300' (1093') - 6.0 km		
C						180	11900' (2693') - 8.0 km		
D						205	12500' (3293') - 8.0 km		

SELT/LTX
COTOPAXI INTL

10 MAY 13

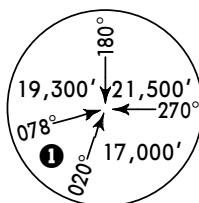
(16-1)

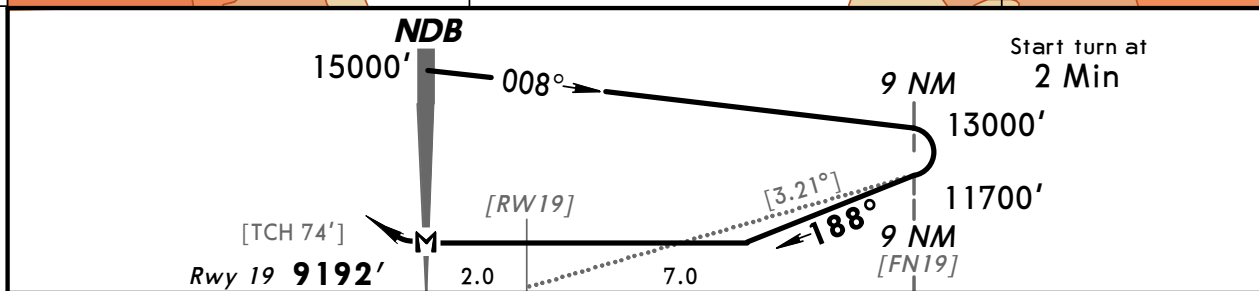
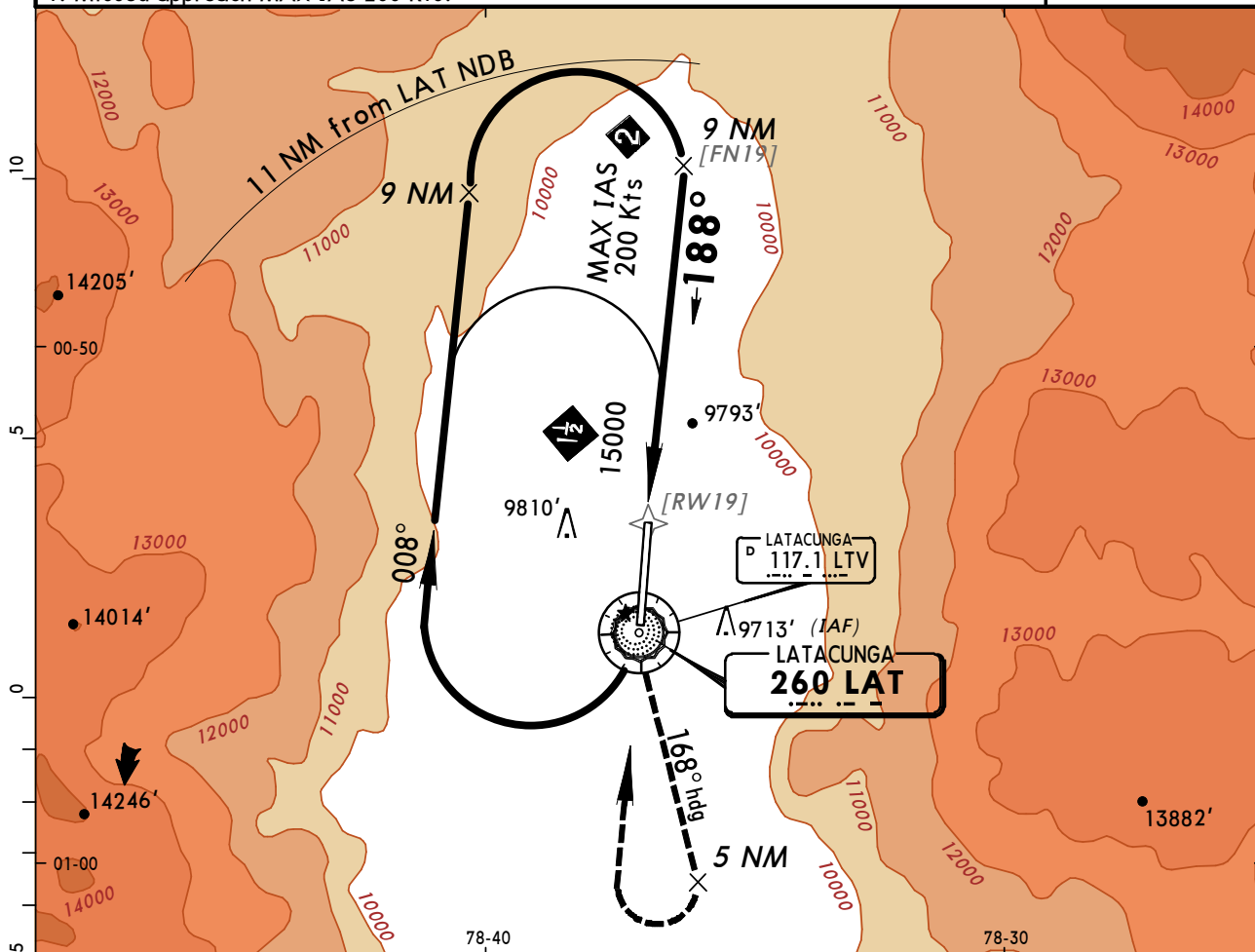
JEPPESSEN

MISSED APCH CLIMB
GRADIENT MIM 5.0%
CAT B, C & D

LATAACUNGA, ECUADOR
DESCENT 1 NDB Rwy 19

BRIEFING STRIP

GUAYAQUIL Control (ACC)		QUITO Approach		LATAACUNGA Tower (APP)		Ground	
128.3 127.95		119.7		118.5		121.9	
NDB LAT 260	Final Apch Crs 188°	No FAF		MDA(H) 10400' (1208')	Apt Elev 9207' Rwy 19 9192'		
MISSED APCH: Climb on heading 168° to 12000' within 5NM LAT NDB, then turn RIGHT to LAT NDB and hold at 15000' or proceed in accordance with ATC instructions.							 MSA LAT NDB 18,000'
Alt Set: hPa Rwy Elev: 294 hPa		Trans level: FL 150		Trans alt: 15000'			
1. Missed approach MAX IAS 200 Kts.							



Gnd speed-Kts	70	90	100	120	140	160	<div>ALS</div> <div>REIL</div> <div>PAPI</div>	168° hdg	12000' ↑ within 5 NM
Descent Angle [3.21°]	398	511	568	682	795	909			
MAP at NDB									

STRAIGHT-IN LANDING RWY 19 Missed apch climb gradient mim 5.0% MDA(H) 10400' (1208')				CIRCLE-TO-LAND RWY 1			
ALS out				Max Kts	MDA(H)		
A	NA			A	NA		
B	6.0 km			135	10400' (1193') - 6.0 km		
C				180	11900' (2693') - 8.0 km		
D				205	12500' (3293') - 8.0 km		

PANS OPS

CHANGES: New procedure.

© JEPPESSEN, 2013. ALL RIGHTS RESERVED.