

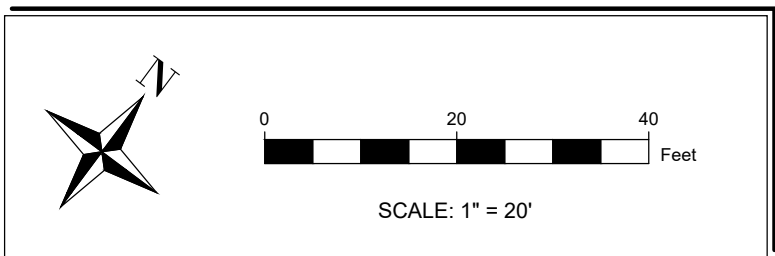
LINE TABLE				
LINE #	LENGTH	DIRECTION	START POINT	END POINT
L-1	28.63'	S19°43'47"E	1501151.42, 612444.13	1501161.08, 612417.19
L-2	54.82'	N53°18'40"E	1501117.12, 612384.43	1501161.08, 612417.19
L-3	164.23'	N36°41'20"W	1501215.24, 612252.73	1501117.12, 612384.43
L-4	39.19'	N53°18'40"E	1501215.24, 612252.73	1501246.67, 612276.15
L-5	2.41'	N05°25'01"W	1501254.63, 612294.07	1501254.40, 612296.47
L-6	143.73'	N36°41'20"W	1501251.11, 612305.02	1501165.23, 612420.28
L-7	5.18'	N53°18'40"E	1501161.08, 612417.19	1501165.23, 612420.28
L-8	3.00'	N36°41'20"W	1501117.12, 612384.43	1501115.33, 612386.84
L-9	36.25'	N53°18'40"E	1501086.26, 612365.18	1501115.33, 612386.84
L-10	17.90'	S81°41'20"E	1501068.55, 612367.77	1501086.26, 612365.18
L-11	30.77'	N53°18'40"E	1501037.94, 612347.88	1501062.61, 612366.27
L-12	81.70'	S36°41'20"E	1501035.28, 612329.69	1501084.09, 612264.17
L-13	74.53'	S36°41'20"E	1501084.09, 612264.17	1501128.62, 612204.41
L-14	85.33'	N53°18'40"E	1501146.81, 612201.75	1501215.24, 612252.73
L-15	17.54'	N36°41'20"W	1501225.72, 612238.67	1501215.24, 612252.73
L-16	15.08'	N53°18'40"E	1501074.16, 612356.17	1501086.26, 612365.18
L-17	28.97'	S36°41'20"E	1501069.87, 612326.78	1501087.18, 612303.55
L-18	33.04'	N08°18'40"E	1501084.09, 612264.17	1501088.87, 612296.87

CURVE TABLE				
CURVE #	LENGTH	RADIUS	DELTA	CHORD BEARING
C-1	20.50'	20.00'	58.7282	N23°56'50"E
C-2	9.28'	17.00'	31.2718	N21°03'10"W
C-3	6.28'	8.00'	45.0000	S75°48'40"W
C-4	20.42'	13.00'	90.0000	S8°18'40"W
C-5	20.42'	13.00'	90.0000	S81°41'20"E
C-6	32.99'	21.00'	90.0000	S8°18'40"W
C-7	7.07'	9.00'	45.0000	N14°11'20"W

SITE STAKING NOTES SEE SHEET C01.1



24-HOUR CONTACT:  
JOE CELENTO  
(912) 272-4811



PANDA EXPRESS, INC.  
1683 WALNUT GROVE AVE.  
ROSEMEAD, CALIFORNIA 91770  
TELEPHONE: 626.799.9898  
FACSIMILE: 626.372.8288

All ideas, designs, arrangement and plans indicated or represented by this drawing are the property of Panda Express Inc. and were created for use on this specific project. None of these ideas, designs, arrangements or plans may be used by or disclosed to any person, firm, or corporation without the written permission of Panda Express Inc.

REVISIONS:

ISSUE DATE:

PLAN CHECK	03-08-23
BID	XX-XX-XX
CONSTRUCTION	XX-XX-XX

DRAWN BY: INGENIUM ENTERPRISES

PANDA PROJECT #: D24956  
PANDA STORE #: TBD  
CIVIL PROJECT #: 220148



INGENIUM ENTERPRISES, INC.  
19445 SHUMARD OAK DR.  
SUITE 102  
LAND O LAKES, FL 34638  
PHONE: (813) 387-0084  
NCBES CERTIFICATE #C-4114



STAKING PLAN

C03.1

PANDA HOME REV4