

Giacinto SCELSI

A I T S I

(pièce pour piano amplifié / *piece for amplified piano*)

Notes pour l'exécution / *Performance notes*

- Le pianiste contrôle la durée de la résonance avec la pédale droite (le trait droit).
The pianist controls the duration of the resonance with the right pedal (vertical line).
- Une autre personne contrôle la durée de la distorsion par l'amplification.
Someone else controls the duration of the distortion by amplification.

Autre possibilité / *Alternative possibility*

- Le pianiste fait tout lui-même, contrôlant la distorsion par un mécanisme lié au pied gauche.
The pianist does everything himself, controlling the distortion with a mechanism attached to the left foot.
- Pour obtenir l'effet d'une note qui disparaît, utiliser la demi-pédale.
Use the half-pedal to obtain the effect of a disappearing note.
- Pour les numéros deux, trois et quatre, il y aura quelques secondes de résonance naturelle ; i.e. sans pédale.
For numbers two, three and four there are a few seconds of natural resonance; i.e. without pedal.

AITSI

Internationales Musikinstitut
Darmstadt 88/36/1

pour piano amplifié

Giacinto SCELSI

SECONDI 0 1 2 3 4 5 6 7 8 9 10 11 12 13 14 15 16 17 18 19

RISONANZA
(RIVERBERO)

DISTORSIONE

ff

28

19

34

ff

34

44

50

ff

50

1.01

1.05

ff

1.05

1.15

1.17

ff

1.17

1.27

ff

1.27

1.29

f

10 sec

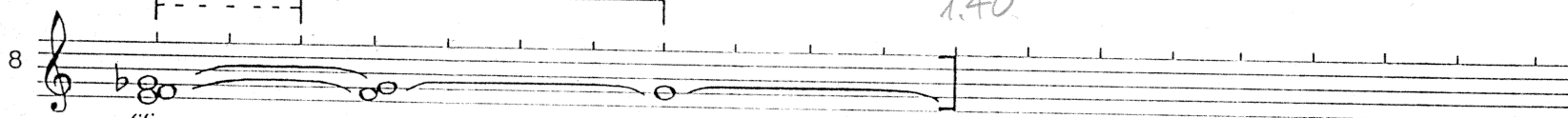
4

0 1 2 3 4 5 6 7 8 9 10 11 12 13 14 15 16 17 18 19

1.29

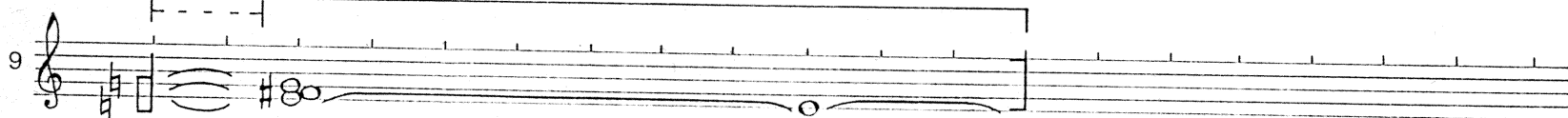
1.36

1.40



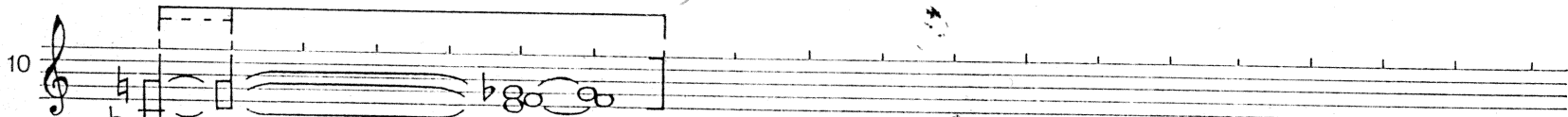
1.40

1.52



1.52

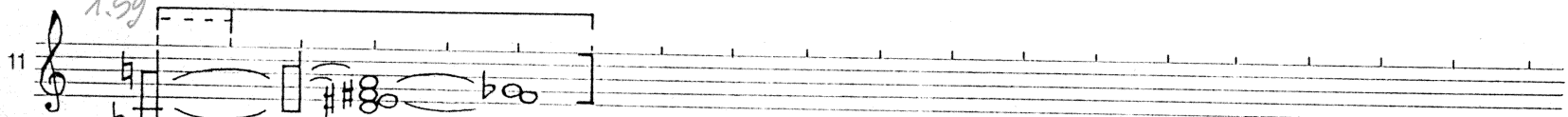
1.59



1.59

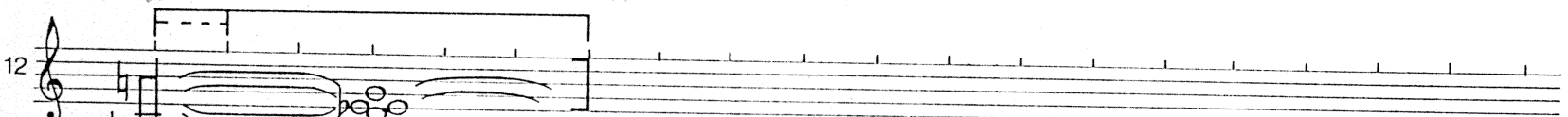
2.00

2.05



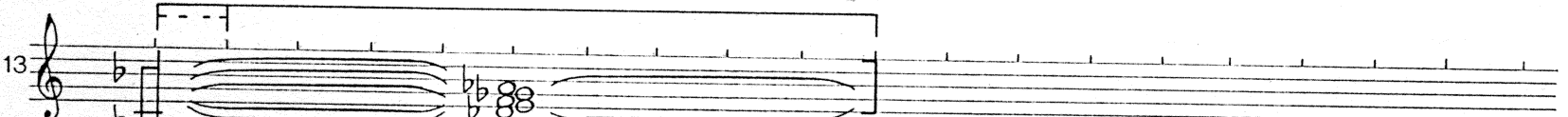
2.05

2.11



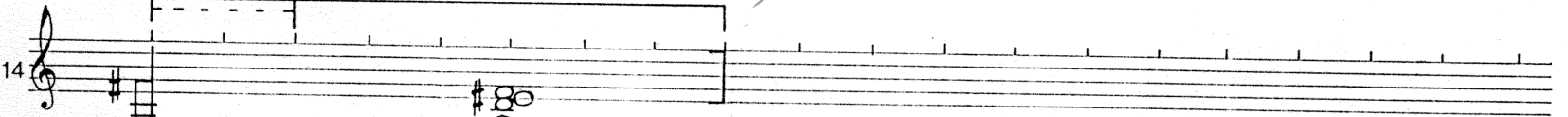
2.11

2.21



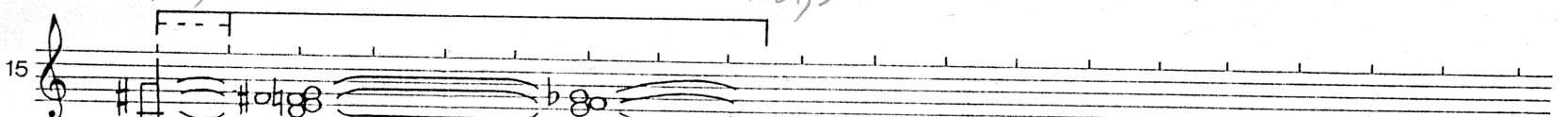
2.21

2.29



2.29

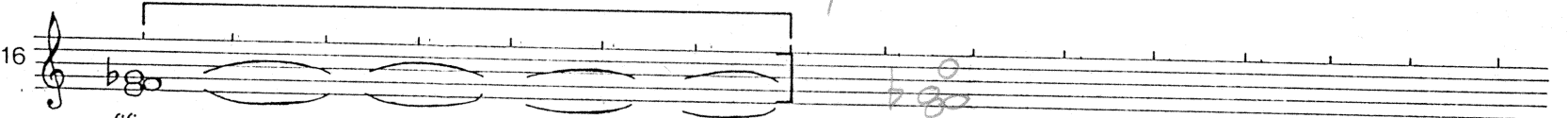
2.37,5



0 1 2 3 4 5 6 7 8 9 10 11 12 13 14 15

2.37,5

2.44,5



ff

to see ~~~~

Handwritten musical score for staves 17 through 24. The score includes a timeline at the top with measures 0 to 15. Each staff contains musical notation with notes, rests, and dynamic markings (ff). Handwritten time stamps are present above and below the staves, indicating specific moments in the piece.

Timeline: 0 1 2 3 4 5 6 7 8 9 10 11 12 13 14 15

Staff 17: *ff*, 2.44,5, 2.52,0

Staff 18: *ff*, 2.52, 3.0, 3.01

Staff 19: *ff*, 3.01, 3.08, 3.14,5

Staff 20: *ff*, 3.14,5, 3.22,0

Staff 21: *ff*, 3.22, 3.26, 3.29,5

Staff 22: *ff*, 3.29,5, 3.36,5

Staff 23: *ff*, 3.36,5, 3.44,5, 3.46,5

Staff 24: *ff*, 3.41,5, 3.46,5

GIRA LUBITO!

0 1 2 3 4 5 6 7 8 9 10 11 12 13 14 15

3.46,5 3.57,5

25 *ff*

3.57,5 4.06,5

26 *p* *dolcissimo*

4.06,5 4.16,5

27 *f*

4.16,5 4.26,0

28 *f* *non secco*

4.26 4.35

29 *f* *non secco*

4.35 4.41,5

30 *mf*

4.41,5 4.45,5

31 *f*

0 1 2 3 4 5 6 7 8 9 10 11 12 13 14 15

4.45,0

4.48,5

4.51,5

32

f

4.51,5

4.53,5

4.56,5

33

ff

4.56,5

5.0

5.01,5

34

ff

5.01,5

5.05,5

5.07,5

35

fff

5.07,5

5.11,5

5.14,5

36

fff

5.14,5

5.17,5

5.22,0

37

fff

5,22 5,27

38 *fff*

5,27 5,34

39 *fff*

5,34 5,38

40 *ff*

5,38 5,46

41 *fff*

5,46 5,54

42 *f non secco*

5,54 6,00 6,06

43 *pp molto dolce*

FINE