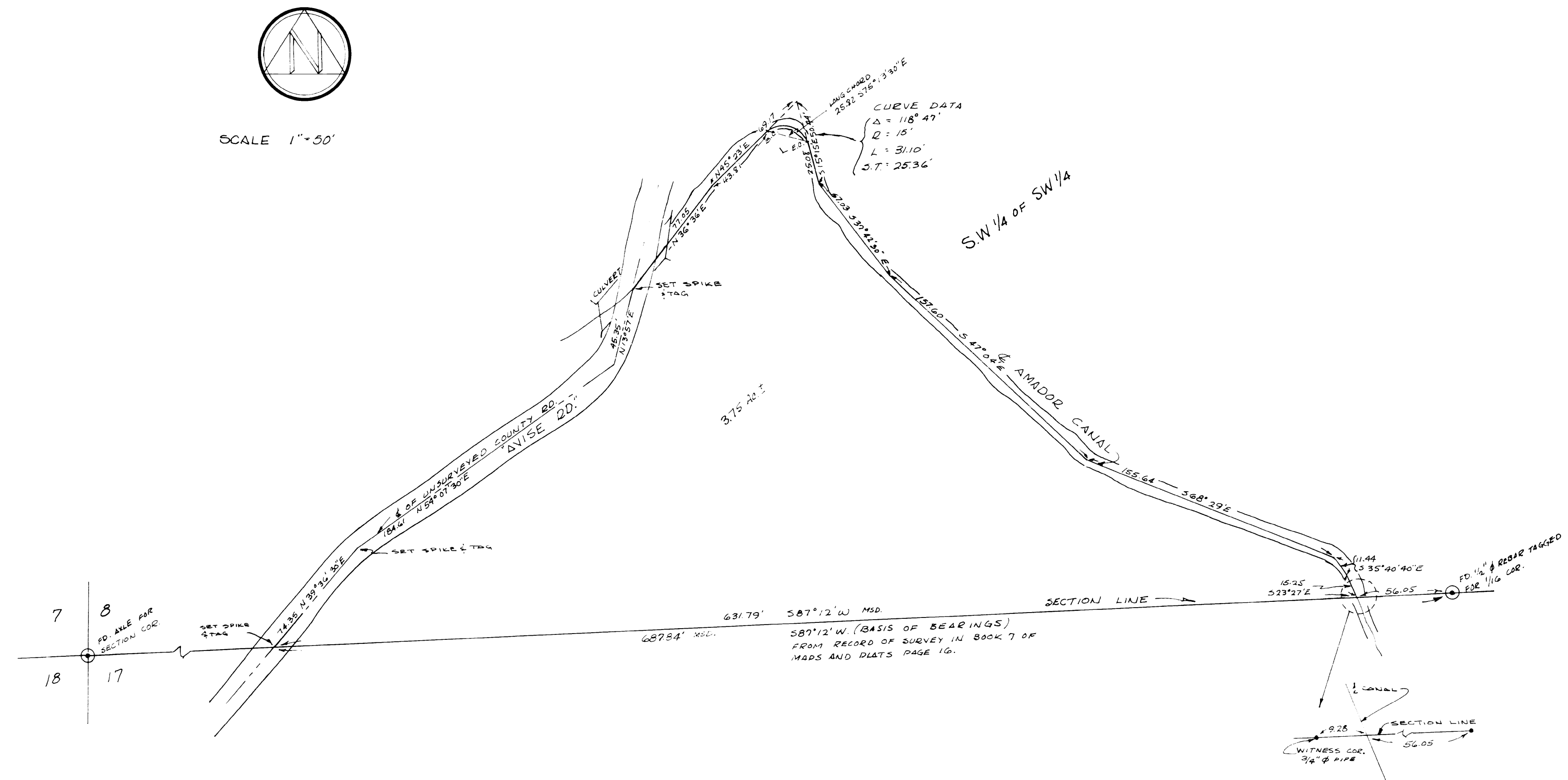


SURVEYORS CERTIFICATE
THIS MAP CORRECTLY REPRESENTS
A SURVEY MADE BY ME OR UNDER
MY DIRECTION IN CONFORMANCE
WITH THE REQUIREMENTS OF CHAPTER
15 OF DIVISION 3 OF THE BUSI-
NESS AND PROFESSIONS CODE AT
THE REQUEST OF
GEO. A. ALLEN
IN MARCH 1963
Walter Sanderson
L.S. 2423

COUNTY
SURVEYORS CERTIFICATE
THIS MAP HAS BEEN EXAMINED FOR
CONFORMANCE WITH THE REQUIRE-
MENTS OF CHAPTER 15 OF DIVISION
3 OF THE BUSINESS AND PROFES-
SIONS CODE THIS 4th DAY
OF April 1963
(Signed) *Lester L. McManis*
County Surveyor

RECORDERS CERTIFICATE
FILED FOR RECORD THIS 4th
DAY OF April 1963
at 4:18 P.M. IN Book 9
OF Maps and Plats PAGE 33 AT
THE REQUEST OF
George A. Allen
INSTR. NO.
FEE \$ 5.00 PA
(Signed) *Anthony Sutton*
County Recorder
By Norma L. Shettle, Rep.



RECORD OF SURVEY
OF A PORTION OF SW 1/4 OF SW 1/4 OF SECTION 8, T.6N., R.12E., MDB&M IN AMADOR COUNTY, CALIF.