

Record of Survey

A PORTION OF THE WEST 1/2 OF GOVERNMENT LOT 3, BEING A PORTION OF THE
NE 1/4 OF SECTION 11 & A PORTION OF GOVERNMENT LOT 1 OF THE
NW 1/4 OF SECTION 11, T. 7 N., R. 10 E., M.D.M.
CITY OF PLYMOUTH, COUNTY OF AMADOR,
STATE OF CALIFORNIA
OCTOBER 2008

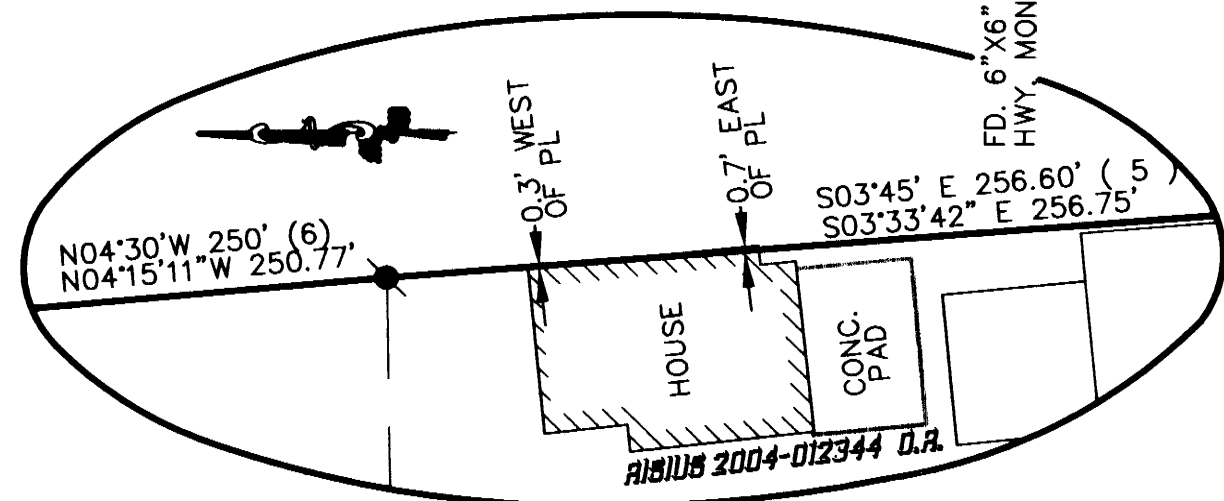
W R G
DESIGN INC.
201 Creekside Ridge Ct. Ste. 100 Roseville CA 95678
Tel. 916.677.8600 Fax. 916.677.8620

COURSE TABLE

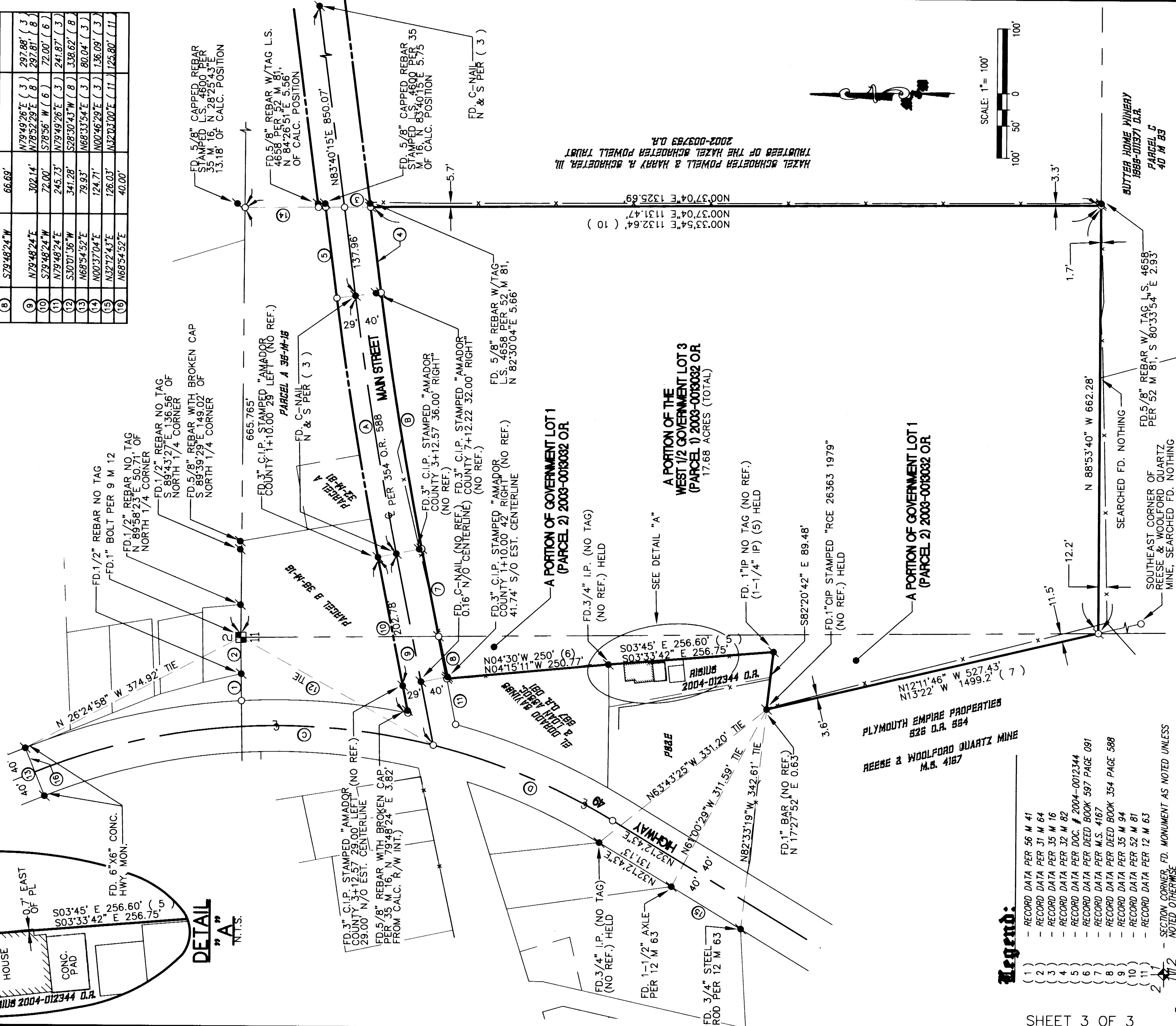
COURSE	BEARING (MEAS.)	DIST. (MEAS.)	BEARING (REC.)	DIST. (REC.)
(1)	N89°49'47"W	41.63'	N89°49'47"W	41.63'
(2)	N89°56'30"W (1)	56.30' (1)	N89°56'30"W (1)	56.30' (1)
(3)	N89°46'00"W (3)	56.08' (3)	N89°46'00"W (3)	56.08' (3)
(4)	N00°37'04"E	40.30'	N00°37'04"E (10)	40.31' (10)
(5)	N83°40'15"E	133.09'	S83°42'25"W (3)	147.06' (3)
(6)	N83°40'15"E	147.25'	N83°42'29"E (3)	849.90' (3)
(7)	N79°48'24"E	850.07'	N82°44'20"E (8)	849.96' (8)
(8)	N79°48'24"E	138.36'	S79°48'24"W	66.69'
(9)	N79°48'24"E	302.14'	N79°49'26"E (3)	297.88' (3)
(10)	S79°48'24"W	72.00'	S78°56' W (6)	72.00' (6)
(11)	N79°48'24"E	245.73'	N79°49'26"E (3)	241.87' (3)
(12)	S30°01'36"W	341.28'	S28°30'43"W (8)	338.62' (8)
(13)	N68°54'52"E	79.93'	N68°33'54"E (3)	80.04' (3)
(14)	N00°37'04"E	124.71'	N00°46'29"E (3)	136.09' (3)
(15)	N32°12'43"E	126.03'	N32°03'00"E (11)	125.80' (11)
(16)	N68°54'52"E	40.00'		

CURVE TABLE

CURVE	DELTA (MEAS.)	ARC LENGTH (MEAS.)	RADIUS (MEAS.)	DELTA (REC.)	ARC LENGTH (REC.)	RADIUS (REC.)
(A)	03°51'51"	404.50'	5997.85'	03°51'51" (8)	404.65' (8)	6000' (8)
(B)	03°51'51"	401.80'	5957.85'	03°53'03" (3)	406.92' (3)	5997.85' (3)
(C)	17°07'15"	298.82'	1000'			
(D)	17°18'51"	302.19'	1000'			



DETAIL "A"
N.T.S.



Legend:

- (1) RECORD DATA PER 56 M 41
- (2) RECORD DATA PER 31 M 64
- (3) RECORD DATA PER 35 M 16
- (4) RECORD DATA PER 32 M 82
- (5) RECORD DATA PER DOC. # 2004-0012344
- (6) RECORD DATA PER DEED BOOK 597 PAGE 091
- (7) RECORD DATA PER DEED BOOK 354 PAGE 588
- (8) RECORD DATA PER 35 M 94
- (9) RECORD DATA PER 52 M 81
- (10) RECORD DATA PER 12 M 63
- (11) SECTION CORNER, FD. MONUMENT AS NOTED UNLESS NOTED OTHERWISE
- 2 1/4 SECTION CORNER, FD. MONUMENT AS NOTED UNLESS NOTED OTHERWISE
- 11 DIMENSION POINT, NOTHING FOUND NOTHING SET
- 1 SET 1" I.P. TAGGED L.S. 5528
- 1 FD. MONUMENT AS NOTED

SHEET 3 OF 3