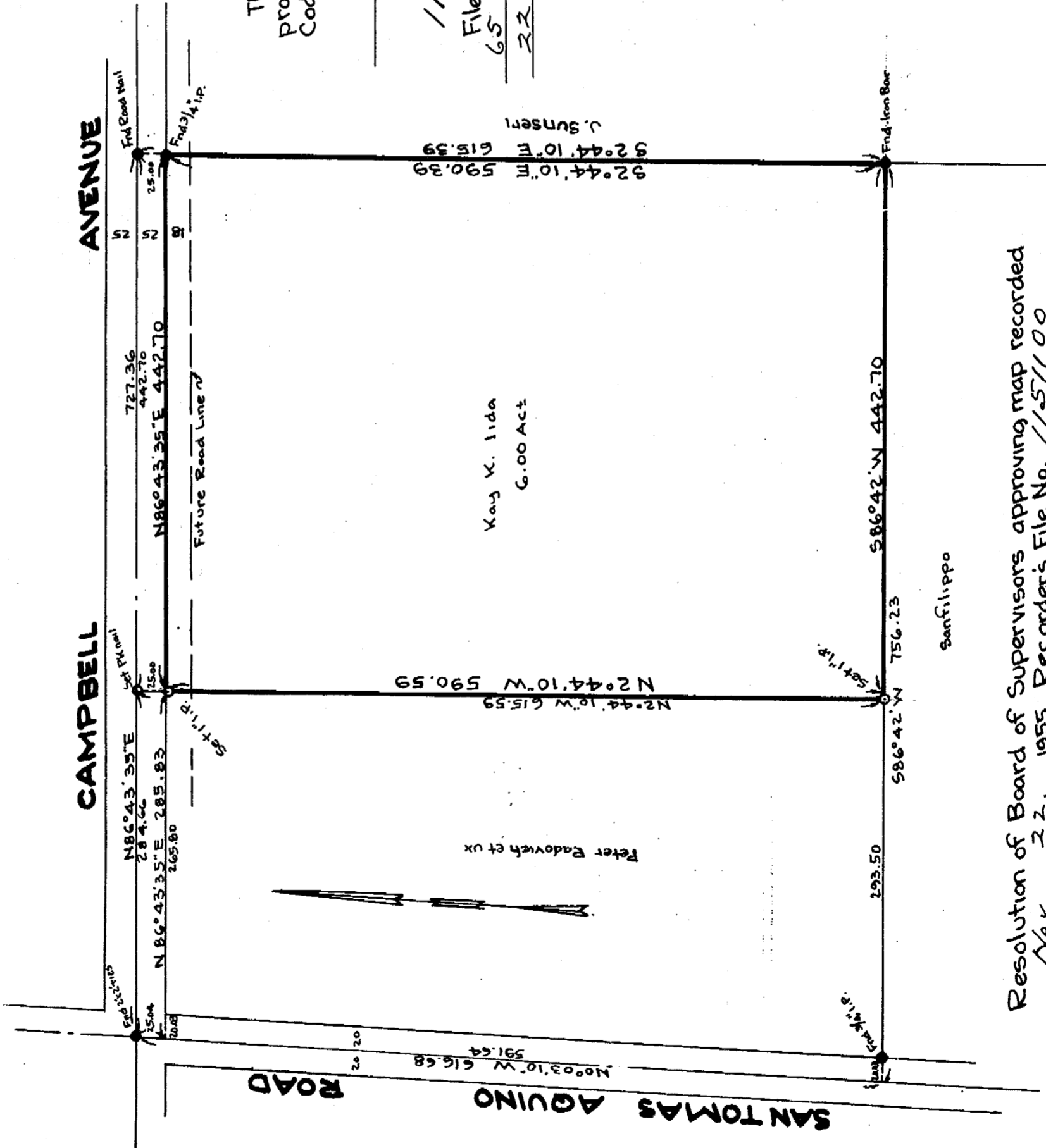


The bearing (N86°43'35"E) of the center line of Campbell Avenue as shown on Record of Survey map recorded in Book 29 of Maps, page 41, was used as basis of bearings shown upon this map.
All distances and dimensions are shown in feet and decimals thereof.



I, Mark E. Thomas, hereby certify that I am a Registered Civil Engineer of the State of California, that this map correctly represents a survey made under my supervision in November, 1955 for Kay K. Iida, that the survey is true and complete as shown, that all monuments shown thereon actually exist and their positions are correctly shown and that said monuments are sufficient to enable the survey to be retraced.

Mark E. Thomas
Registered Civil Engineer No. 2578

This map has been examined in compliance with the provisions of Section 8766 of the Business and Professions Code and found satisfactory.

Leonard Bushnell, County Engineer
Nov 22 1955, by *[Signature]* Deputy

1151101

Filed at the request of Mark Thomas & Co. and recorded in Book 65 of Maps, page 7, Santa Clara County Records, this 22 day of Nov 1955, at 2:08 P. M.

Syl C. Tully, County Recorder
\$5.00 by *[Signature]*

RECORD OF SURVEY
IN THE
QUITO RANCHO
SANTA CLARA COUNTY CALIFORNIA
FOR
KAY K. IIDA
SCALE 1"=100 NOVEMBER, 1955

MARK THOMAS & CO.
CONSULTING CIVIL ENGINEERS
SAN JOSE CALIFORNIA

Resolution of Board of Supervisors approving map recorded Nov 22, 1955, Recorder's File No. 1151100