

PARCEL MAP

No. 1314

Owner: Redevelopment Agency of the City of Oakland
1333 Broadway
Oakland, California

A PORTION OF BLOCKS 573, 572 AS SHOWN ON BOARDMAN'S MAP OF OAKLAND AND VICINITY, AS SHOWN IN BOOK 17 OF MAPS PAGE 14 AND A PORTION OF BLOCK 'D' AS SHOWN ON THE MAP OF THE OAKLAND CENTRAL HOMESTEAD ASSOCIATION AS SHOWN IN BOOK 'W' OF DEEDS PAGE 193 AND PORTION OF PLAN SUBDIVISION OF BLOCK 570 BOOK 1 OF MAPS PAGE 9 IN THE CITY OF OAKLAND, ALAMEDA COUNTY, CALIFORNIA.

WILEY J. PIERCE, JR. (L.S. 3300) — OAKLAND — CALIFORNIA
SCALE 1" = 100' DECEMBER 1972

SURVEYOR'S CERTIFICATE

THIS MAP WAS PREPARED BY ME OR UNDER MY DIRECTION AND WAS COMPILED FROM RECORD DATA, AND IS BASED UPON A FIELD SURVEY IN CONFORMANCE WITH THE REQUIREMENTS OF THE SUBDIVISION MAP ACT AT THE REQUEST OF THE OAKLAND REDEVELOPMENT AGENCY ON DECEMBER 1972. I HEREBY CERTIFY THAT ALL PROVISIONS OF APPLICABLE STATE LAW AND LOCAL ORDINANCE HAVE BEEN COMPLIED WITH.

Wiley J. Pierce, Jr.
WILEY J. PIERCE, JR.
L.S. #3300

CITY ENGINEER'S CERTIFICATE

THIS MAP HAS BEEN EXAMINED THIS 27th DAY OF November, 1973, FOR CONFORMANCE WITH THE REQUIREMENTS OF SECTION 11575 OF THE SUBDIVISION MAP ACT.

JAMES E. MCCARTY RCE #7609
CITY ENGINEER

RECORDER'S CERTIFICATE

FILED THIS 1st DAY OF July 1974 AT 1:00 P.M. IN BOOK 84 OF PARCEL MAPS AT PAGE 9 AT THE REQUEST OF WILEY PIERCE JR.

JACK G. BLUE
COUNTY RECORDER
BY: John J. Blue
DEPUTY COUNTY RECORDER

BASIS OF BEARING

CITY MONUMENT LINE ON 12TH STREET BETWEEN FILBERT AND CHESTNUT STREET, USED CITY BEARINGS AS SHOWN.

LEGEND

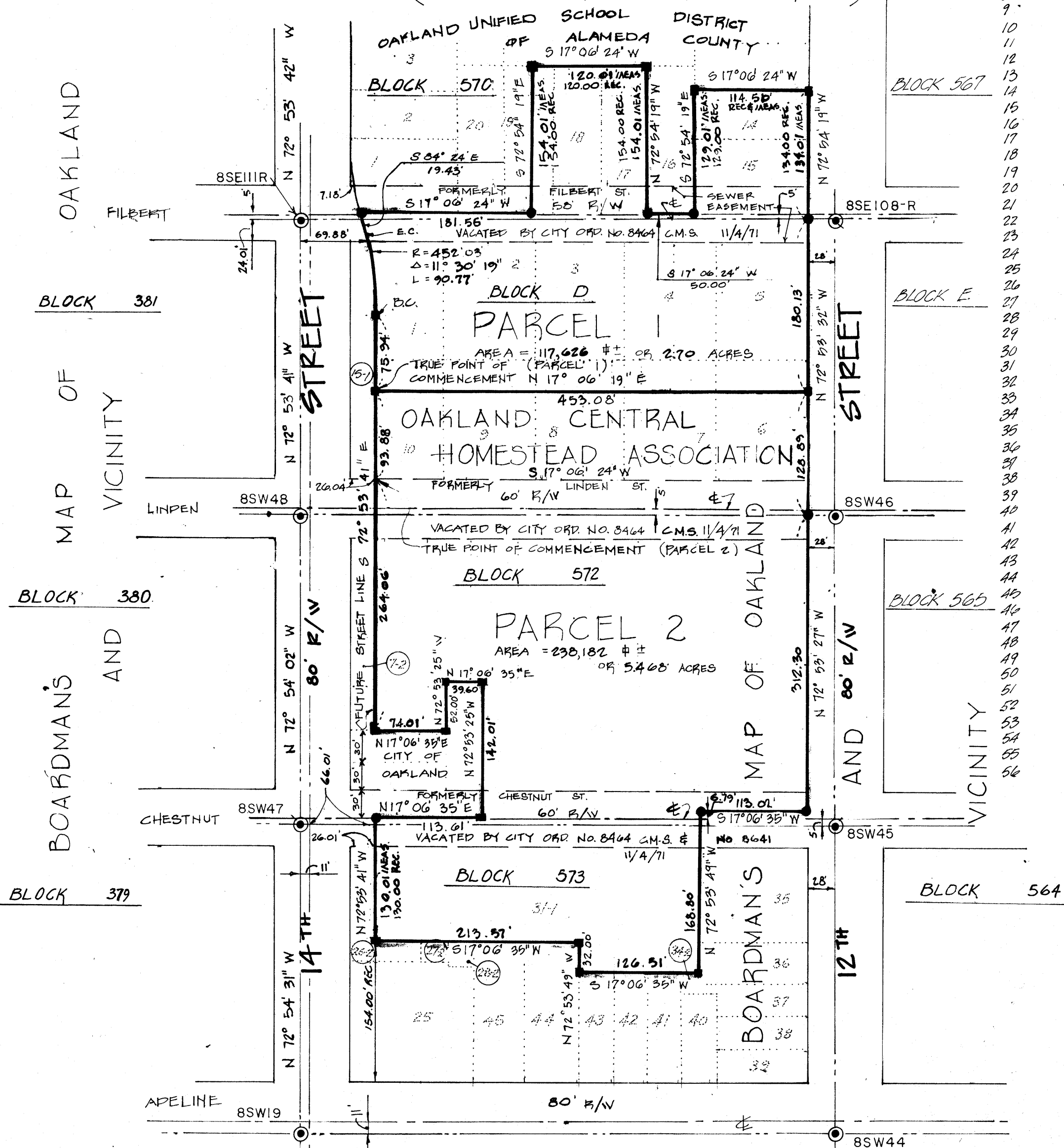
- ⊙ INDICATES CITY MONUMENTS FOUND
- SET NAIL
- SET HUB & TACK
- + CUT CROSS
- MONUMENT LINE EXTENDED

NOTE: ALL ANGLES 90° UNLESS OTHERWISE NOTED

★ USE WITH CAUTION ★
THIS IS A PUBLIC WORKS DEPARTMENT WORKING COPY OF AN OFFICIAL MAP ON FILE IN THE OFFICE OF THE COUNTY RECORDER, COUNTY OF ALAMEDA. OFFICE INFORMATION OR CALCULATIONS MAY HAVE BEEN ADDED HEREON.

MAP OF PLAN OF SUBDIVISION OF BLOCK NO. 570, CITY OF OAKLAND

FILED FEB. 12, 1870 BK. 1 OF MAPS PG. 9



Title Information:	Reel	Image
1	2348	15
2	2167	282
3	2377	576
4	2061	653
5	2177	329
6	2326	726
7	2142	505
8	2282	972
9	2133	242
10	2100	640
11	2021	864
12	2077	140
13	2061	656
14	2077	869
15	2158	255
16	2066	471
17	2180	670
18	2021	502
19	2197	482
20	2057	898
21	2100	695
22	2057	887
23	2088	932
24	2094	560
25	2052	337
26	2170	792
27	2323	40
28	2282	959
29	2019	971
30	2021	506
31	2075	228
32	2061	174
33	2057	916
34	2035	714
35	2072	661
36	2107	191
37	2105	771
38	2065	614
39	2054	972
40	2111	459
41	2063	182
42	2200	958
43	2061	657
44	2690	523
45	2558	812
46	2163	151
47	2100	695
48	2368	582
49	2489	299
50	2741	38
51	2079	837
52	2170	800
53	2173	843
54	2753	575
55	2743	645
56	2769	282