



EROSION CONTROL LEGEND

ESPC / BMP	LINETYPE/SYMBOL
CONSTRUCTION EXIT	
SILT FENCE	
INLET PROTECTION (IP)	
DUST CONTROL	
TEMPORARY SEEDING	
PERMANENT SEEDING	
CONCRETE WASHOUT	
SLOPE STABILIZATION	
LIMITS OF CONSTRUCTION	
TREE PROTECTION	

SEE LANDSCAPE/TREE PROTECTION PLANS FOR LEGEND SPECIFIC TO THOSE SHEETS

ESPC NOTES

GENERAL

1. EROSION CONTROL MEASURES SHALL BE MAINTAINED AT ALL TIMES. IF FULL IMPLEMENTATION OF THE APPROVED PLAN DOES NOT PROVIDE FOR EFFECTIVE EROSION CONTROL, ADDITIONAL EROSION CONTROL MEASURES AND PRACTICES SHALL BE IMPLEMENTED TO CONTROL OR TREAT THE SEDIMENT SOURCE AT THE EXPENSE OF THE CONTRACTOR.
2. THE ESCAPE OF SEDIMENT FROM THE SITE SHALL BE PREVENTED BY THE INSTALLATION OF EROSION AND SEDIMENT CONTROL MEASURES AND PRACTICES PRIOR TO LAND DISTURBING ACTIVITIES.
3. ANY DISTURBED AREA LEFT EXPOSED FOR A PERIOD GREATER THAN 14 DAYS SHALL BE STABILIZED WITH MULCH OR TEMPORARY SEEDING.
4. ANY AMENDMENT TO THE EROSION CONTROL PLANS WHICH HAVE A SIGNIFICANT EFFECT ON BMPS WITH A HYDRAULIC COMPONENT MUST BE CERTIFIED BY THE DESIGN PROFESSIONAL.
5. THE PERMITEE IS ONLY RESPONSIBLE FOR THE FOR THE INSTALLATION AND MAINTENANCE OF STORM WATER MANAGEMENT DEVICES PRIOR TO STABILIZATION OF THE SITE AND NOT THE OPERATION AND MAINTENANCE OF SUCH STRUCTURES AFTER CONSTRUCTION ACTIVITIES HAVE BEEN COMPLETED.
6. EROSION CONTROL AND TREE PROTECTION MEASURES SHALL BE INSTALLED PRIOR TO ANY OTHER CONSTRUCTION ACTIVITY AND MAINTAINED UNTIL PERMANENT GROUND COVER IS ESTABLISHED.
7. SEE GRADING & DRAINAGE NOTES.

SLOPES AND DISTURBED AREA STABILIZATION

1. CONCENTRATED FLOW AREAS AND ALL SLOPES 2H:1V OR STEEPER SHALL BE STABILIZED WITH THE APPROPRIATE EROSION CONTROL MATTING OR BLANKET.
2. ALL CUT AND FILL SLOPES MUST BE SURFACE ROUGHENED AND VEGETATED WITHIN (7) DAYS OF THEIR CONSTRUCTION.
3. ALL DISTURBED AREAS SHALL BE GRASSED AS SOON AS CONSTRUCTION PHASES PERMIT. NO EXPOSED GRADE WILL BE LEFT UNSTABLE FOR MORE THAN 7 DAYS.
4. PERMANENT GRASSING AND LANDSCAPING OF DISTURBED AREAS SHALL BE COMPLETED AS QUICKLY AS POSSIBLE. TEMPORARY STABILIZATION BY MULCHING AND/OR TEMPORARY SEEDING WILL BE REQUIRED IN THE EVENT OF PROJECT DELAYS.
5. WIRE MESH REINFORCED SEDIMENT BARRIERS SHALL BE PLACED AT THE TOE OF ALL FILL SLOPES.

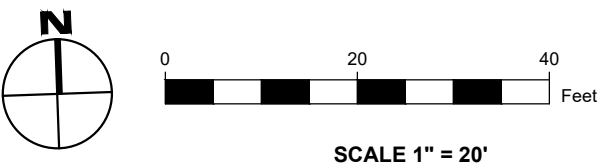
DRAINAGE

1. ALL DRAINAGE STRUCTURES SHALL BE EROSION PROOFED.

MAINTENANCE AND INSPECTIONS

1. SEDIMENT CONTROL DEVICES MUST BE INSPECTED DAILY AND CHECKED AFTER EACH STORM EVENT AND CLEANED OR REPLACED WHEN THEY REACH 1/3 OF DESIGN CAPACITY.
2. MAINTENANCE OF ALL SOIL AND SEDIMENTATION CONTROL MEASURES AND PRACTICES, WHETHER TEMPORARY OR PERMANENT, SHALL BE AT ALL TIMES THE RESPONSIBILITY OF THE CONTRACTOR.

24-HOUR CONTACT:
CLAY WORTHY
(602) 931-6540



BASED IN THE WEB SOIL SURVEY
INFORMATION, ALL SOILS AT THIS SITE ARE
CLASSIFIED AS: MeB & EnD

TOTAL DISTURBED AREA THIS PHASE: 0.89AC.

CONTRACTOR SHALL PROTECT ALL ITEMS
OUTSIDE LIMITS OF CONSTRUCTION
UNLESS OTHERWISE NOTED IN THE
CONSTRUCTION PLANS OR
SPECIFICATIONS.

CONTRACTOR SHALL FIELD VERIFY ALL
EXISTING UTILITIES (LOCATIONS AND
ELEVATIONS) PRIOR TO STARTING
CONSTRUCTION AND ALERT ENGINEER TO
ANY DISCREPANCIES IMMEDIATELY.



PANDA EXPRESS, INC.

1683 WALNUT GROVE AVE.
ROSEMead, CALIFORNIA 91770

TELEPHONE: 626.799.9898
FACSIMILE: 626.372.8288

All ideas, designs, arrangement and plans indicated or represented by this drawing are the property of Panda Express Inc. and were created for use on this specific project. None of these ideas, designs, arrangements or plans may be used by or disclosed to any person, firm, or corporation without the written permission of Panda Express Inc.

REVISIONS:

ISSUE DATE:

ISSUE FOR PERMIT 04-07-22
ISSUE FOR BID 04-25-22

DRAWN BY: KBS

PANDA PROJECT #D8689
PANDA STORE #:
ARCH PROJECT #:



ESPC PLAN
CLEARING PHASE
C06.1