

# CORNER RECORD

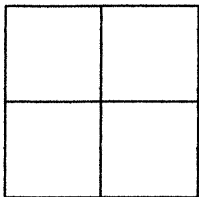
BK 35 Pg 5

Document Number CR 3853

City of OAKLAND

County of ALAMEDA, California

Brief Legal Description BRASS PIN IN MONUMENT WELL LOCATED WITHIN THE INTERSECTION OF HIGH STREET AND FOOTHILL BOULEVARD.(49/F/19)



## CORNER RECORD

Government Corner ☐ Control ☒  
 Meander ☐ Property ☐  
 Rancho ☐ Other ☐  
 Date of Survey 08/04/09

## COORDINATES (Optional)

N. \_\_\_\_\_  
 E. \_\_\_\_\_  
 Zone \_\_\_\_\_ Datum \_\_\_\_\_  
 Elev. \_\_\_\_\_

Corner — Left as found ☒ Found and tagged ☐ Established ☐ Reestablished ☐ Rebuilt ☐

Identification and type of corner found: Evidence used to identify or procedure used to establish of reestablish the corner:  
 FOUND BRASS PIN IN MONUMENT WELL LOCATED WITHIN THE INTERSECTION OF HIGH STREET AND FOOTHILL BOULEVARD. AS SHOWN ON CITY OF OAKLAND MONUMENT MAP, PAGE 122.

THIS POINT WAS REFERENCED PRIOR TO A CONSTRUCTION PROJECT IN THE VICINITY.

A description of the physical condition of the monument as found and as set or reset:  
 FOUND AND SET POINTS AS SHOWN ON PAGE 2.

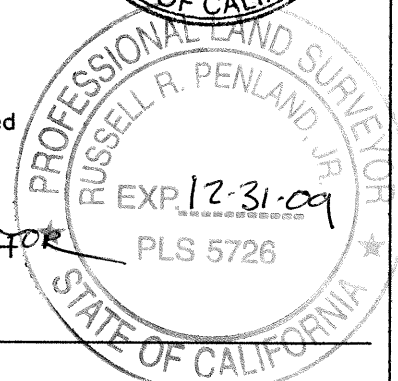
## SURVEYOR'S STATEMENT

This Corner Record was prepared by me or under my direction in conformance with the Land Surveyors' Act on AUGUST 4, 2009.  
 Signed Vincent H. Cunha L.S. Number LS 4520  
 VINCENT H. CUNHA



## COUNTY SURVEYOR'S STATEMENT

This Corner Record was received 8-7-2009 and examined  
 and filed 11-23-2009.  
 Signed Richard Penland Title COUNTY SURVEYOR



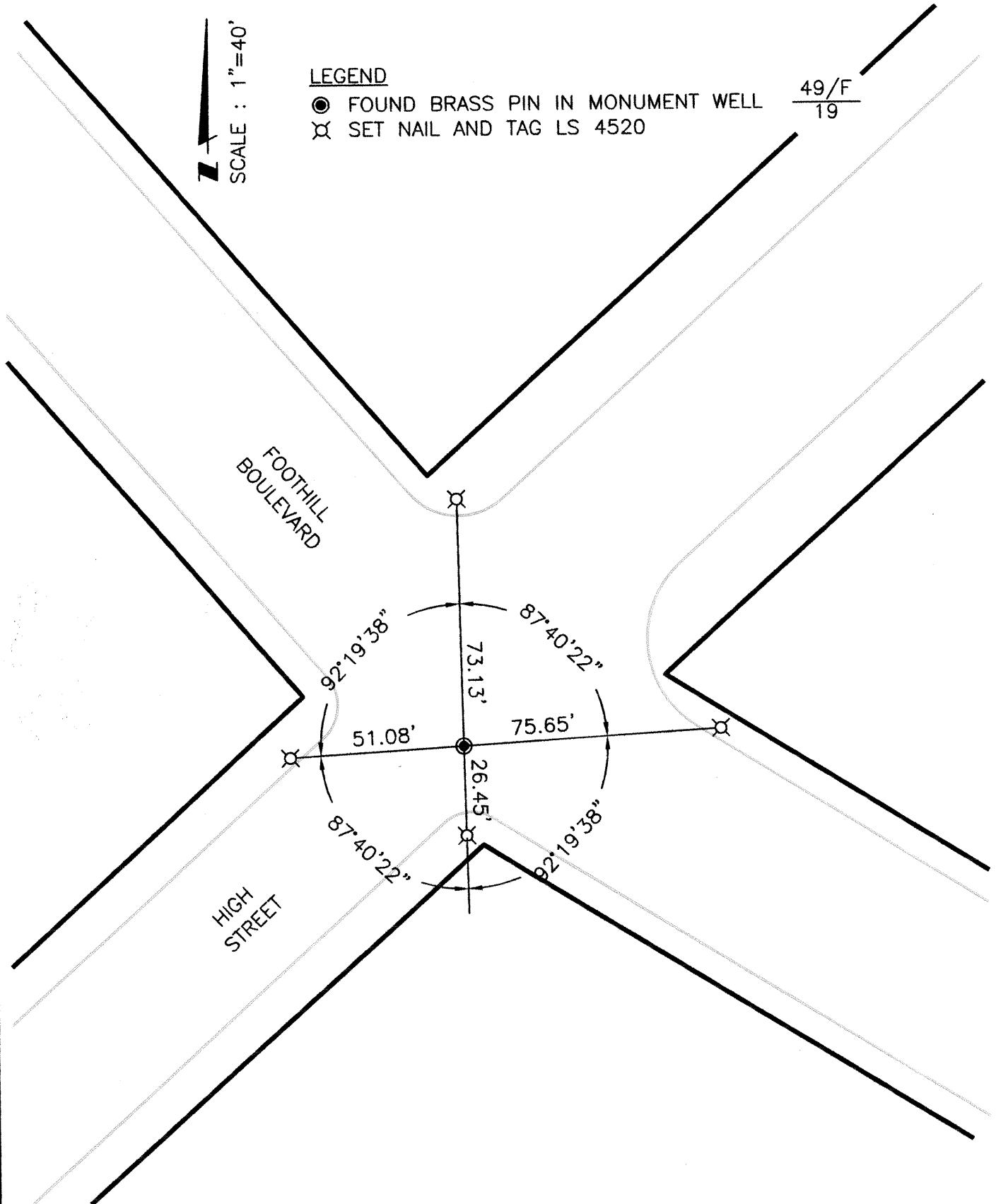
County Surveyor's Comment

SCALE : 1"=40'

LEGEND

- FOUND BRASS PIN IN MONUMENT WELL
- ⊗ SET NAIL AND TAG LS 4520

$\frac{49/F}{19}$



79014-14