

Set-13

Amazing Facts

by Dr. Vipin Goyal





GS Course

By Dr. Vipin Goyal



Flat Rs.500 Discount
Use Code:"VIP500"

Coupon Valid Till 6th Jan'20





<https://www.facebook.com/vipangoyal13>



<https://www.instagram.com/vipangoyal13>



vipan.studyiq@gmail.com



Search : t.me/DrVipanGoyal

4G 15:48

←  **Dr Vipin Goyal**
28K subscribers

All GK Playlist links below :
Click on the links :
UP SI, Bihar SI, MP SI, WB SI : <https://bit.ly/2oS1Gln>
RRB NTPC Group D Questions : <https://bit.ly/2ov41SW>
GK Doubt Session : <https://bit.ly/2mob5jO>
Best 1000 GK Questions : <https://bit.ly/2koEJnR>
Best 500 GK questions : <https://bit.ly/2IJf2ic>
GS Show by Dr Vipin Goyal : <https://bit.ly/2maephV>
Top 100 GK Questions : <https://bit.ly/2mbnxTu>
Previous Year Questions : <https://bit.ly/2kEaw4o>
Static Gk : <https://bit.ly/2mbbx4p>
Science lecture : <https://bit.ly/2keiP6T>
Polity Lectures : <https://bit.ly/2INnlnW>
History Lectures : <https://bit.ly/2kg52g8>
Geography lectures : <https://bit.ly/2kG1iV8>

😊 Broadcast 🔔 📎 🎤



Do you know ?

1. The average adult human body contains about **250 grams** of **salt**, which is just over half a **pound**.

If you don't have enough **salt**, your **body** suffers an electrolyte imbalance called hyponatremia.





Do you know ?

2. The metal with the highest melting point is *tungsten*, at 3410 degrees Celsius (6170F).

Tungsten conducts electrical current very well





Do you know ?

3. Mosquitoes Are Attracted to Women More Than to Men

Mosquitoes like the scent of *estrogen*, hence, women get bitten by mosquitoes more often than men do.

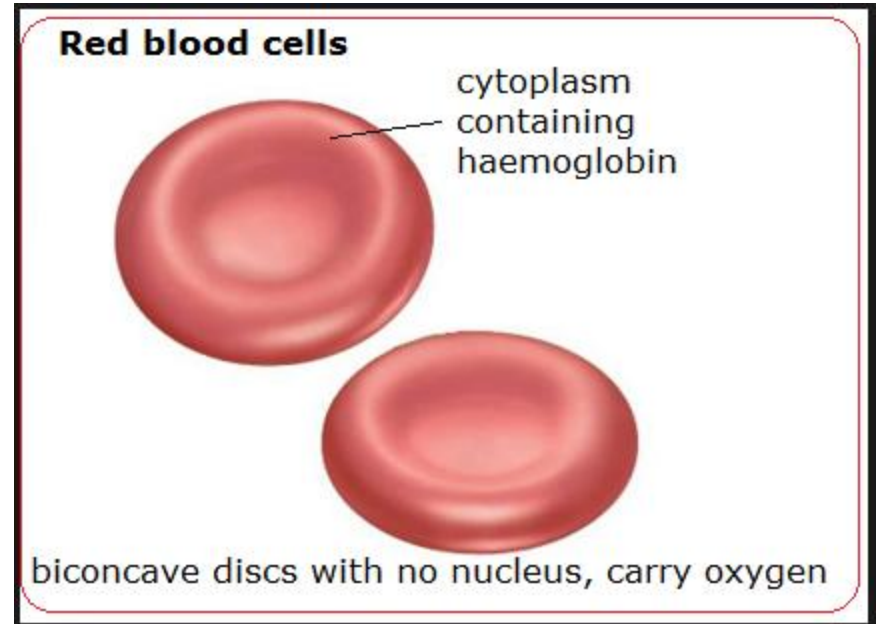




Do you know ?

4. Red blood cells have no *nucleus*.

Exception : Camel and Lama





Do you know ?

5. Safdarjung Tomb

Safdarjung's tomb was built by Nawab Shuja-ud-Daulah, the son of Safdarjung.

Safdarjung was the governor of Awadh and later became the Prime Minister of Muhammad Shah, the Mughal emperor.

Built in 1753-1754, the Safdarjung tomb lies at the Lodi road, New Delhi.

Safdarjung's tomb is set in the middle of a garden





Do you know ?

6. Sanchi Stupa

Sanchi is famous for outstanding specimen of Buddhist art and architecture, belonging to the period between the third century BC and the twelfth century AD.

The most important of all the Sanchi monuments is the Sanchi Stupa.

Stupas are large hemispherical domes, containing a central chamber, in which the relics of the Buddha were placed.

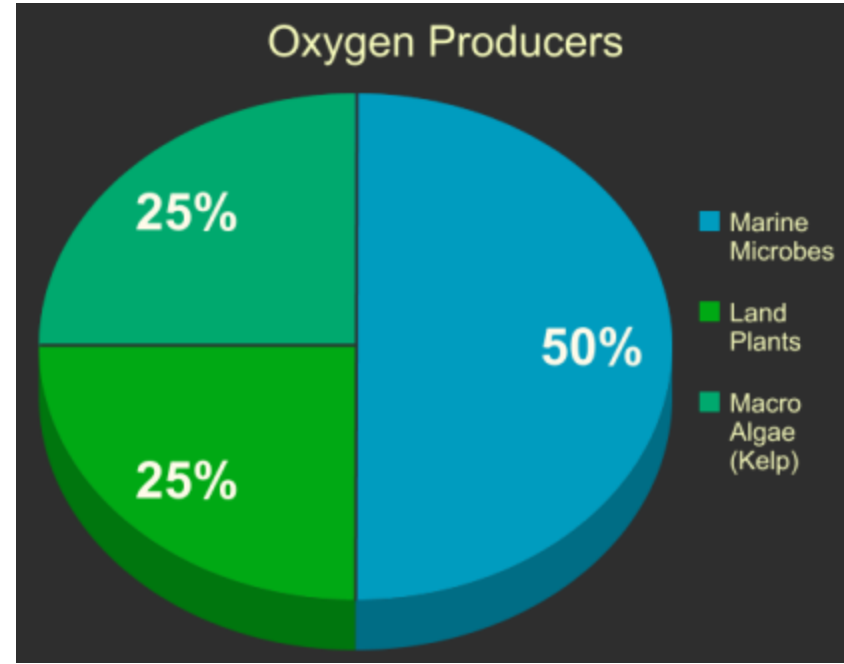
It is located in 46 kilometres (29 mi) north-east of [Bhopal](#), capital of [Madhya Pradesh](#).





Do you know ?

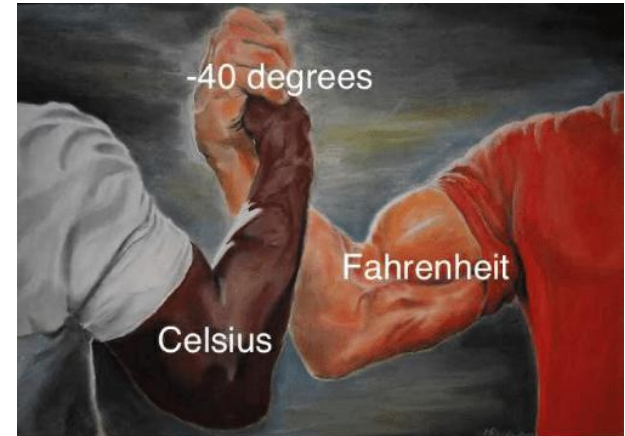
7. **marine plants produce** between **70** and 80 percent of **the oxygen in the atmosphere**. Nearly all **marine plants** are single celled, photosynthetic **algae**.





Do you know ?

8. *Minus 40 degrees Celsius* is exactly the same temperature as minus 40 degrees Fahrenheit.

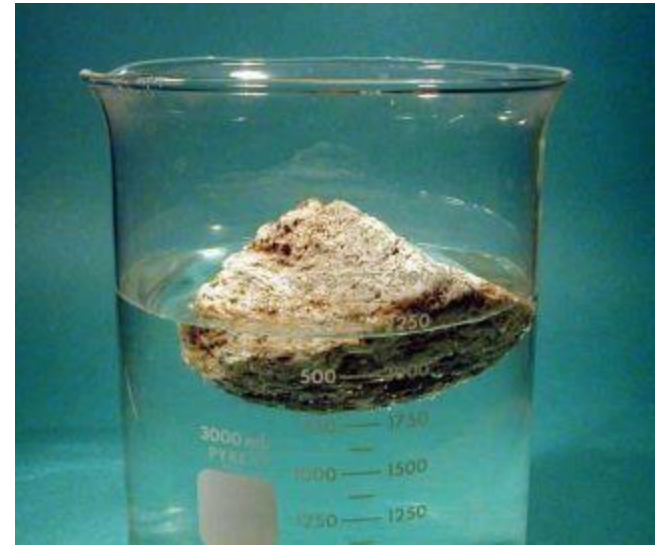




Do you know ?

9. The only rock that floats in water is *pumice*.

When rocks are submerged in **water** they tend to sink because of their weight.



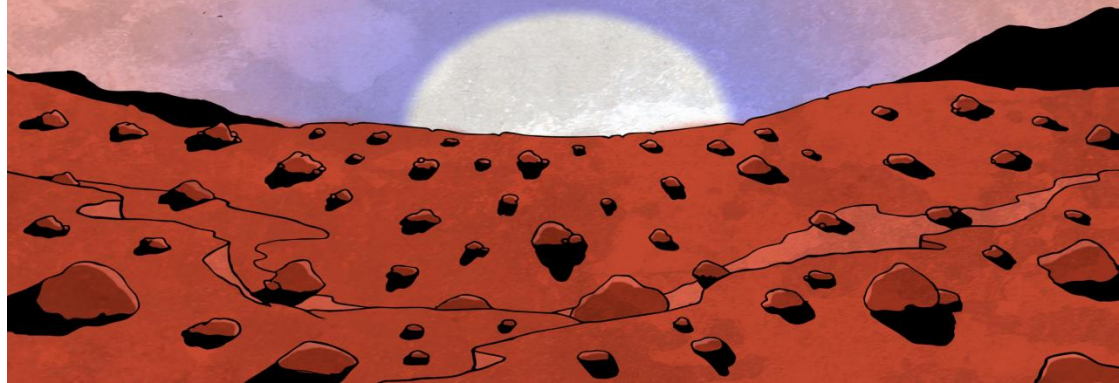


Do you know ?

10. *Mars* is red because its soil is very rusty (iron oxide.)

@earthmounds

Because of the atmosphere on Mars,
the sky is pink and the sunset is blue!





GS Course

By Dr. Vipin Goyal



Flat Rs.500 Discount
Use Code:"VIP500"

Coupon Valid Till 6th Jan'20





<https://www.facebook.com/vipangoyal13>



<https://www.instagram.com/vipangoyal13>



vipan.studyiq@gmail.com

Thank You