

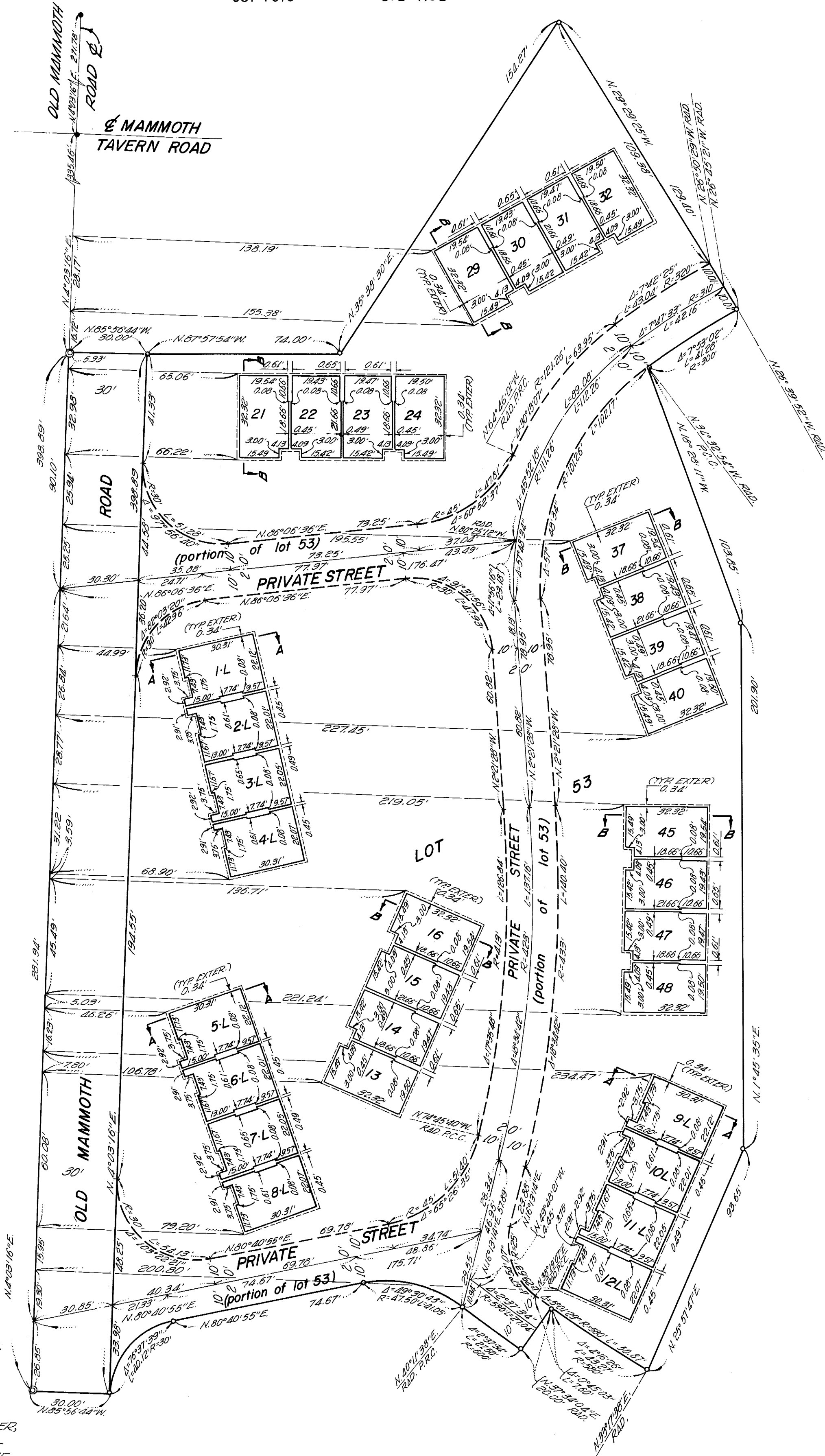
SIERRA MANORS NO.1

IN THE UNINCORPORATED TERRITORY OF THE COUNTY OF MONO
FOR CONDOMINIUM PURPOSES

JULY, 1968

DONALD MILLER R.C.E. 15360

ENGINEER:
GALLOWAY, BARKDULL & MILLER
14044 VENTURA BLVD. SUITE 201
SHERMAN OAKS, CALIF. 91403
981-7616 872-1162



LEGEND:
● FD. 5' 6" PER SIERRA PARK, BOOK 5,
PAGES 33 THRU 35.
○ SET 3" I.P.
○ SET 2" I.P.

NOTES:
LOT 53 IS THE LAND AND REAL PROPERTY INCLUDED WITHIN THE BLUE BORDER OF THIS SUBDIVISION, EXCEPT THERE FROM THOSE PARCELS INCLUDED WITHIN UNITS 1 THRU 52, INCLUSIVE, AS HEREIN DEFINED. EACH PARCEL SHOWN (OTHER THAN LOT 53) IS A SUBDIVISION OF AIR SPACE. UNITS 1 THROUGH 12 INCLUSIVE, ARE EACH COMPOSED OF TWO PARCELS, ONE DESIGNATED WITH A NUMBER, FOLLOWED BY THE LETTER "L", AND THE OTHER DESIGNATED WITH THE SAME NUMBER, FOLLOWED BY THE LETTER "U". UNITS 13 THROUGH 52 INCLUSIVE, ARE EACH COMPOSED OF BUT ONE PARCEL DESIGNATED WITH THE NUMBER USED TO DESIGNATE THE UNIT. AREAS DESIGNATED BY A NUMBER, FOLLOWED BY THE LETTER "U", ARE BALCONIES ADJACENT TO THE UNIT BEARING SUCH NUMBER, BUT ARE NOT PART OF ANY UNIT. ON ALL PARCELS SOLID LINES INDICATE INTERIOR FACES OF WALLS OF A BUILDING CONSTRUCTED OR TO BE CONSTRUCTED.

NOTES CONTINUED:
THE BOUNDARIES OF THE PARCELS SHOWN HEREON ARE MEASURED TO THE INTERIOR SURFACES OF THE VERTICAL, HORIZONTAL AND INCLINED PLANES AT THE LIMITS OF THE DIMENSIONS OR ELEVATIONS SHOWN. THE SURVEY TIES SHOWN ARE TO THE VERTICAL PROJECTION OF THE OUTSIDE FACE OF STUD WALLS.