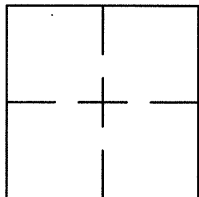


**CORNER RECORD**Document Number CR 9195City of EDEN TOWNSHIPCounty of ALAMEDA, CaliforniaBrief Legal Description BRASS DISC MONUMENT LOCATED WITHIN CARSON LANE.**CORNER RECORD**Government Corner ☐Meander ☐Rancho ☐Date of Survey 10/26/16Control ☒Property ☐Other ☐**COORDINATES**

(Optional)

N. 2085720E. 6117432

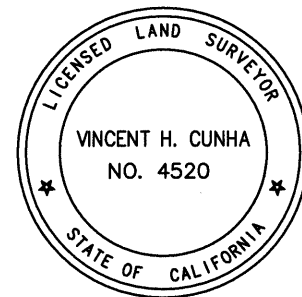
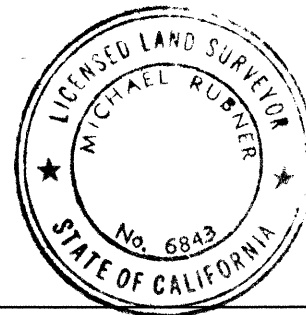
Zone \_\_\_\_\_ Datum \_\_\_\_\_

Elev. \_\_\_\_\_

**Corner** — Left as found ☒ Found and tagged ☐ Established ☐ Reestablished ☐ Rebuilt ☐

 Identification and type of corner found: Evidence used to identify or procedure used to establish of reestablish the corner:  
FOUND BRASS DISC WITH PUNCH IN MONUMENT WELL.
SEE CR 8777THIS POINT WAS FOUND IN GOOD CONDITION AFTER A CONSTRUCTION PROJECT IN THE VICINITY.

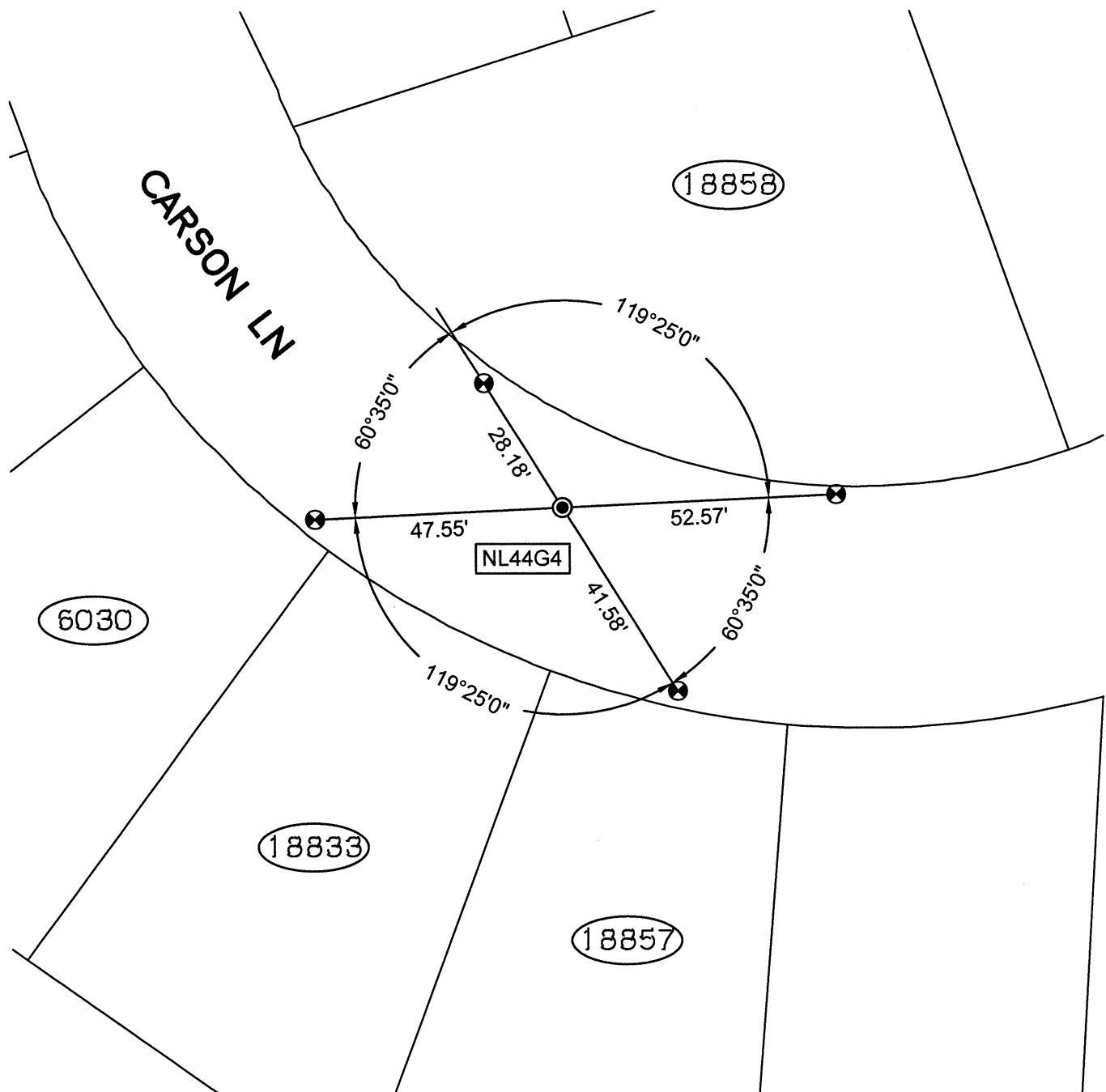
A description of the physical condition of the monument as found and as set or reset: \_\_\_\_\_

FOUND AND SET POINTS AS SHOWN ON PAGE 2.THE TIES SHOWN HEREON ARE FOR THE PURPOSE OF PERPETUATING FOUND MONUMENTATION.NO CLAIM IS MADE AS TO THE RELATIONSHIP OF THE POINTS OR LINES SHOWN HEREON TOTRUE BOUNDARY LOCATIONS.**SURVEYOR'S STATEMENT**
 This Corner Record was prepared by me or under my direction in conformance with  
 the Land Surveyors' Act of OCTOBER 27, 2016.
Signed Vincent H. Cunha L.S. Number LS 4520VINCENT H. CUNHA**COUNTY SURVEYOR'S STATEMENT**
 This Corner Record was received 31 OCTOBER 2016 and examined  
 and filed 9 DECEMBER 2016.
Signed Michael Rubner Title COUNTY SURVEYOR**County Surveyor's Comment** \_\_\_\_\_SPEC 2304-POST

SCALE: 1"=30'

## LEGEND

- FOUND BRASS DISC WITH PUNCH IN MONUMENT WELL
- ⊗ FOUND CUT CROSS IN WALK
- ✕ FOUND CUT CROSS IN CURB
- FOUND REBAR & CAP STAMPED "CEI RP"
- AA##A# ALAMEDA COUNTY MONUMENT ID
- 19592 REFERENCE STREET ADDRESS



216140-CR03 post