

TRACT 2772

PLEASANTON TOWNSHIP, ALAMEDA COUNTY, CALIFORNIA
IN THE UNINCORPORATED TERRITORY IN THE COUNTY OF ALAMEDA

KENNETH Q. VOLK & ASSOCIATES—CONSULTING ENGINEERS

SCALE: 1"=60'

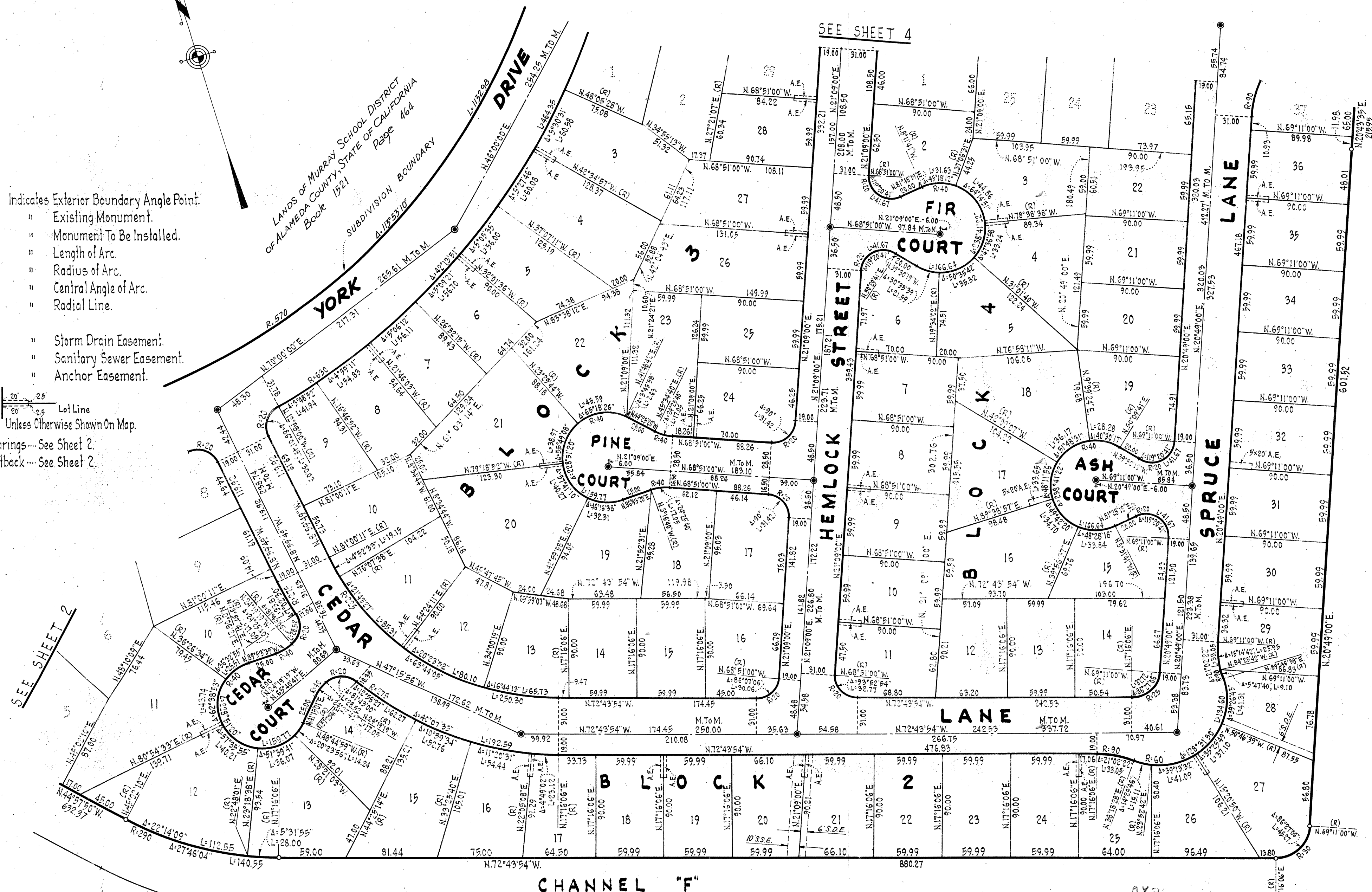
JUNE, 1965

LEGEND

- Indicates Exterior Boundary Angle Point.
- ⊙ " Existing Monument.
- ⊙ " Monument To Be Installed.
- L " Length of Arc.
- R " Radius of Arc.
- Δ " Central Angle of Arc.
- (R) " Radial Line.
- S.D.E. " Storm Drain Easement.
- S.S.E. " Sanitary Sewer Easement.
- A.E. " Anchor Easement.

20' 25' Lot Line
Unless Otherwise Shown On Map.

Basis of Bearings—See Sheet 2.
Building Setback—See Sheet 2.



ALAMO CANAL

TR.
2772