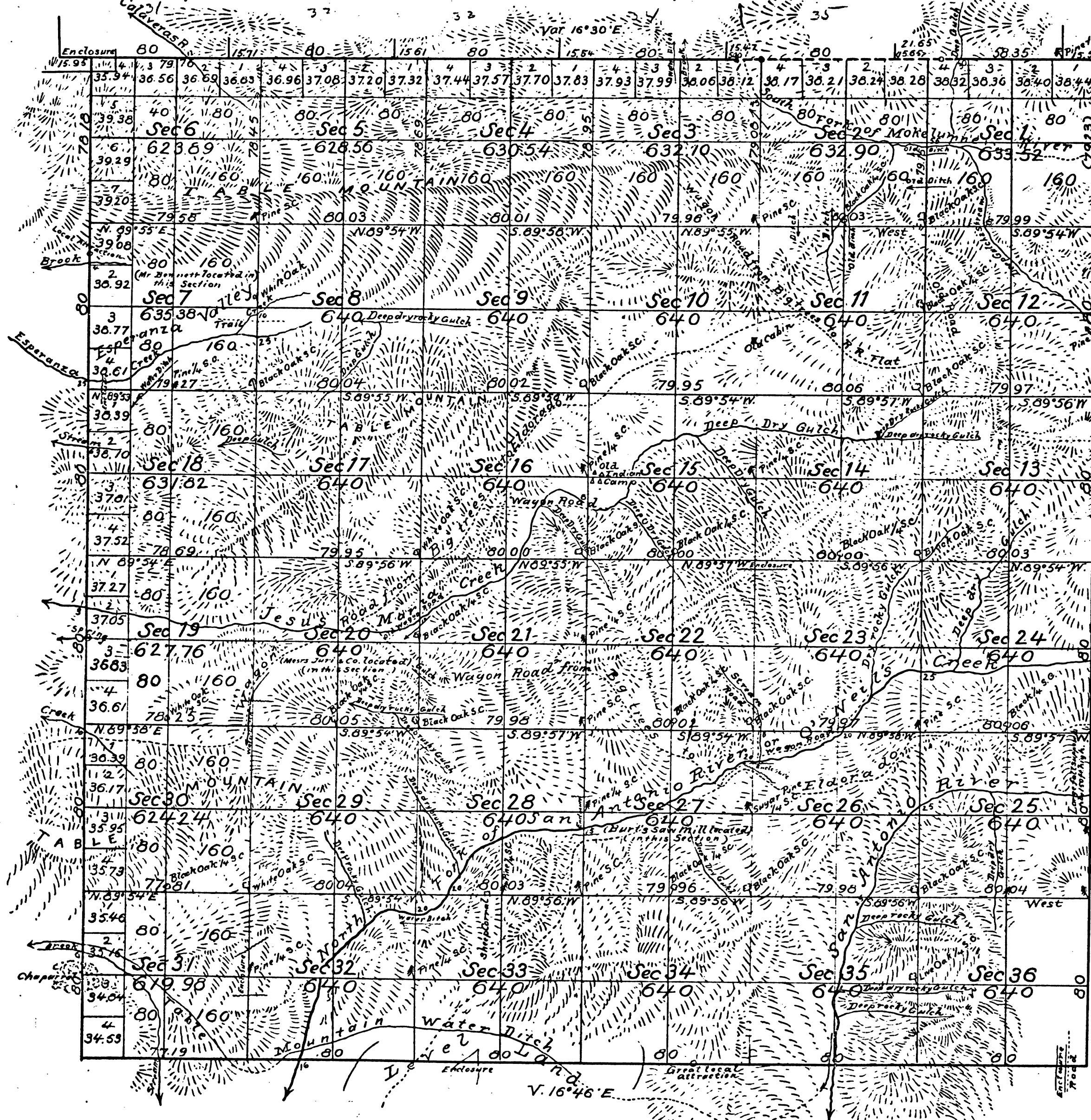


Township N°5 North, Range N°14 East, Mount Diablo Meridian.



Aggregate Area of Public Land 22,920.69 Acres.

Var. on Section lines 17° E.

Filed in District Land Office March 30th, 1874.

Surveys Designated	By whom surveyed	Date of Contract	Acres of Surveys	When surveyed
Township lines	Fleming Amyx	Sept. 30 th 1856		1859
Section	Geo. B. Tolman	Aug. 4 th 1873	59m ⁶⁶ c ² 99l ¹ s	Nov. 8 th 1873

DEPARTMENT OF THE INTERIOR,
GENERAL LAND OFFICE,
Washington, D. C. Oct. 11, 1907.
I hereby certify that this is a true copy
of the plat of official survey of the lands
to which it relates, on file in this office.

The above Map of Township N°5 North, Range N°14 East
of Mount Diablo Meridian is strictly conformable to the field
notes of the Surveys thereof on file in this Office, which have
been examined and approved.
Surveyor General's Office,
San Francisco California,
March 25th 1874.

John H. Gaston
Surv Gen Cal

41 448