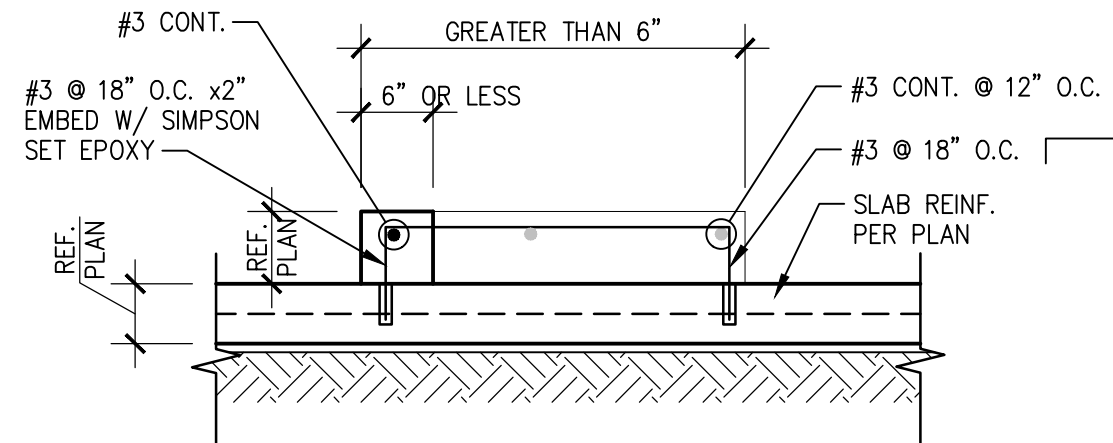
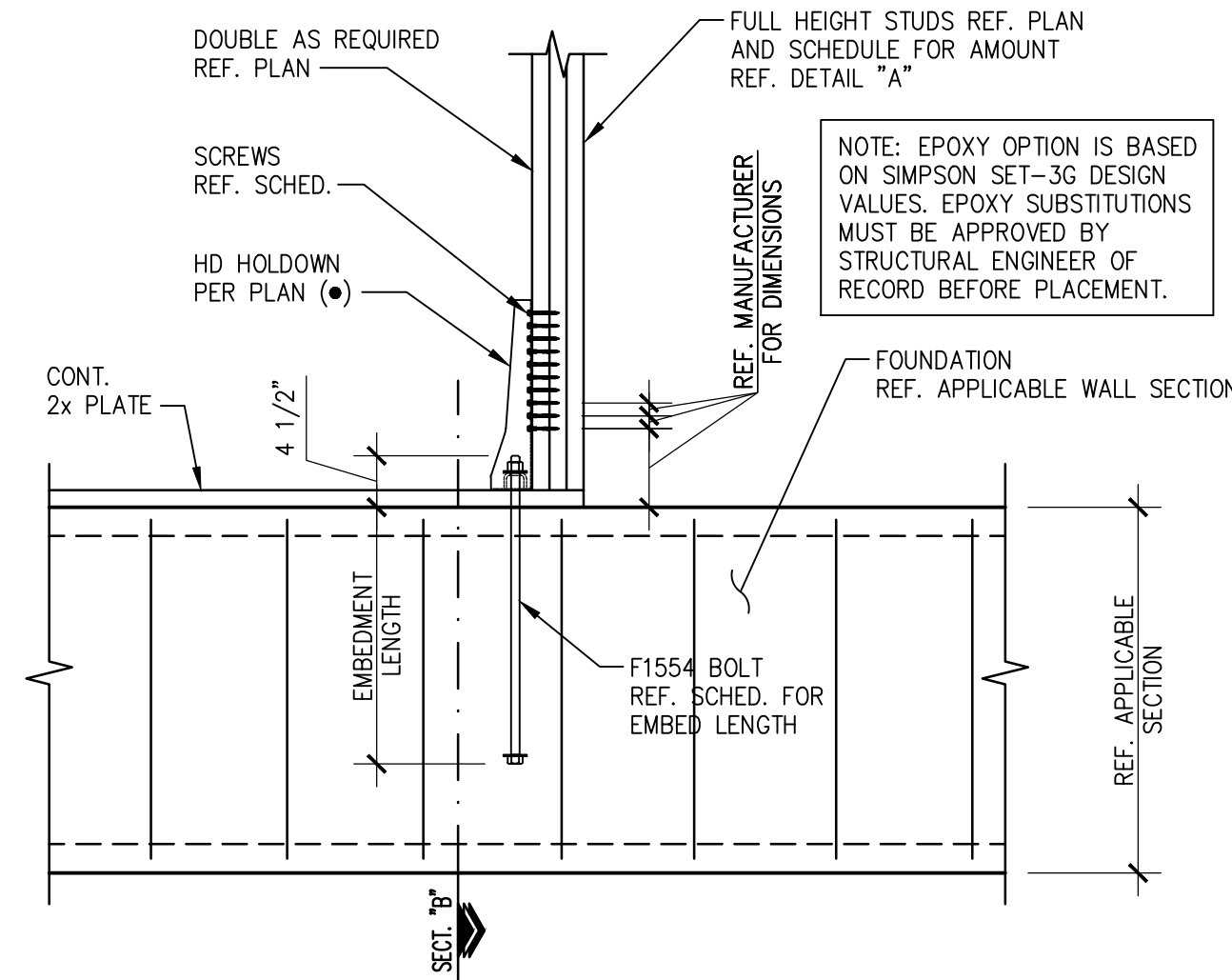


01 TYP. PENETRATION THRU FOOTINGS OR GRADE BEAMS
SCALE: 3/4"=1'-0"

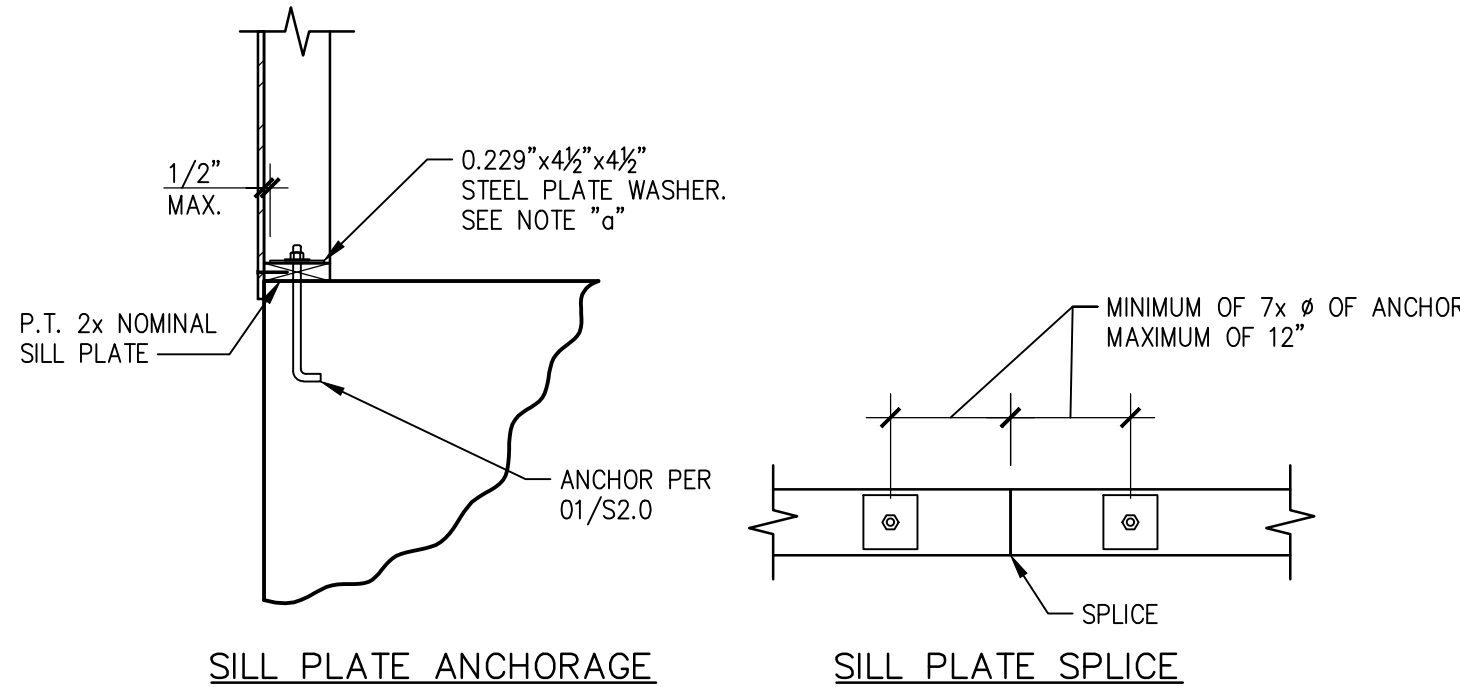


02 TYP. CURB
SCALE: 3/4"=1'-0"



HOLDOWN	POST/2x	BOLT/SCREW #	ANCH. BOLT	EDGE DISTANCE	CAST IN PLACE REQUIREMENTS	EPOXY OPTION REQUIREMENTS
HDU5-SDS2.5	3	(14) SDS 1/4"x2 1/2"	3/8" Ø	14"	1'-0"	1'-0"
HDU8-SDS2.5	3	(20) SDS 1/4"x2 1/2"	7/8" Ø	14"	1'-0"	1'-0"
HDU11-SDS2.5	4x6	(30) SDS 1/4"x2 1/2"	1" Ø	16"	1'-2"	1'-4"
HDU14-SDS2.5	6x6	(36) SDS 1/4"x2 1/2"	1" Ø	16"	1'-2"	1'-4"

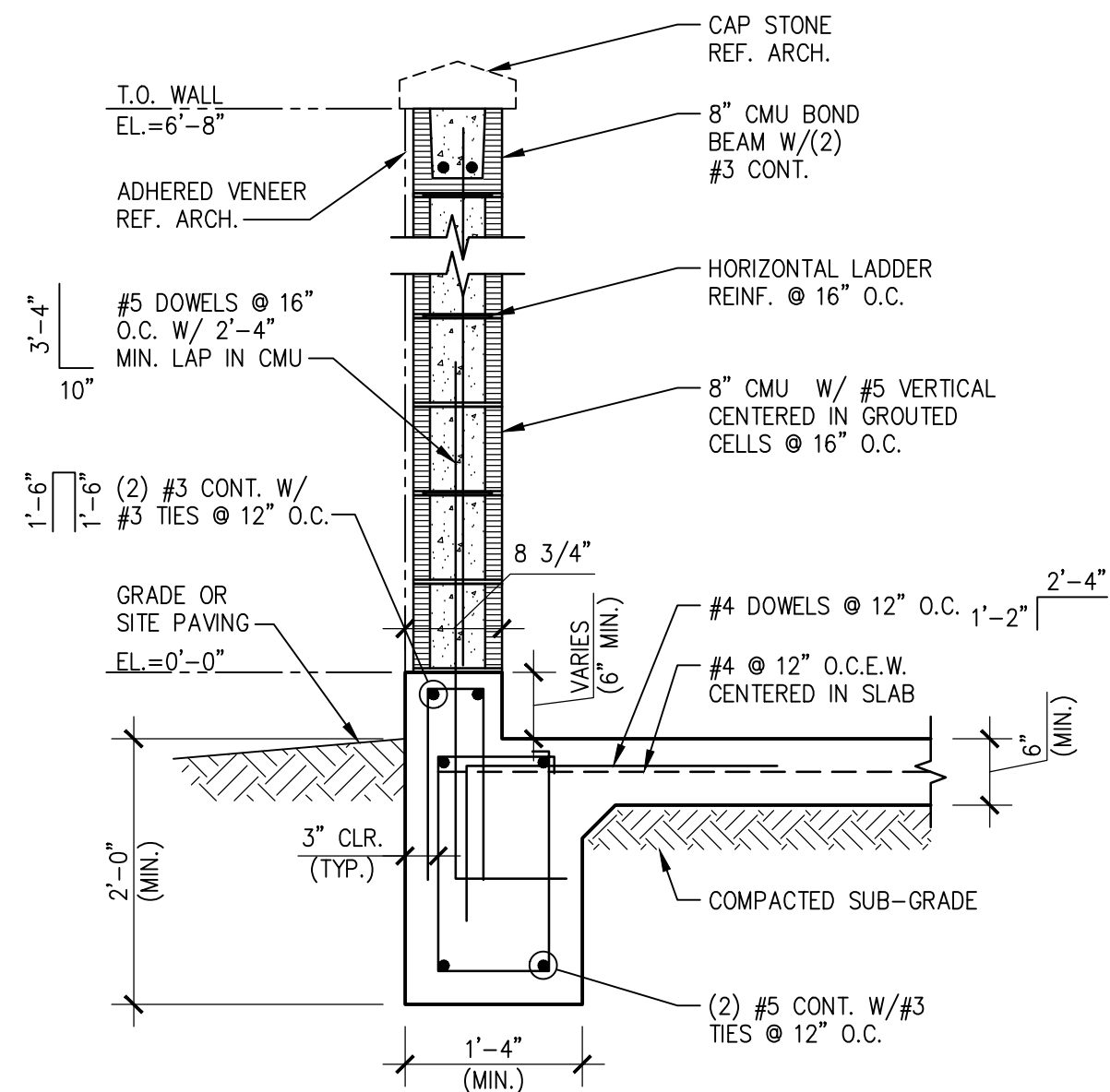
03 TYP. HOLDOWN DETAIL
SCALE: 3/4"=1'-0"



04 TYP. SILL PLATE ANCHORAGE
SCALE: 3/4"=1'-0"

NOTES:

a. IF STANDARD CUT WASHER IS PLACED BETWEEN PLATE WASHER AND NUT, THE HOLE IN THE PLATE WASHER MAY BE DIAGONALLY SLOTTED UP TO 1 3/4" WITH WIDTH UP TO 3/16" LARGER THAN BOLT DIAMETER.



05 TYP. TRASH ENCLOSURE SECTION
SCALE: 3/4"=1'-0"

EMBEDMENT LENGTHS

CONCRETE 28-DAY COMPRESSIVE STRENGTH - 3,000 PSI

BAR SIZE	STRAIGHT BARS		HOOKED BARS
	"TOP" BAR	OTHER BAR	
3	1'-10"	1'-5"	0'-9"
4	2'-5"	1'-10"	0'-11"
5	3'-0"	2'-4"	1'-2"
6	3'-7"	2'-9"	1'-5"
7	5'-3"	4'-0"	1'-8"
8	6'-0"	4'-7"	1'-10"
9	6'-8"	5'-2"	2'-1"
10	7'-5"	5'-9"	2'-4"
11	8'-2"	6'-4"	2'-6"

GRADE 60 REINFORCEMENT. MINIMUM LENGTHS SHOWN ABOVE SHALL BE USED UNLESS OTHERWISE NOTED ON THE PLANS. "TOP" BARS ARE HORIZONTAL BARS PLACED SUCH THAT MORE THAN 12 INCHES OF FRESH CONCRETE IS CAST IN THE MEMBER BELOW THE BAR.

LAP SPLICE LENGTHS

CONCRETE 28-DAY COMPRESSIVE STRENGTH - 3,000 PSI

BAR SIZE	SPACING 6" OR GREATER		SPACING LESS THAN 6"	
	"TOP" BAR	OTHER BAR	"TOP" BAR	OTHER BAR
3	2'-5"	1'-10"	2'-11"	2'-3"
4	3'-2"	2'-5"	3'-10"	2'-11"
5	3'-11"	3'-1"	4'-9"	3'-9"
6	4'-8"	3'-7"	5'-8"	4'-4"
7	6'-10"	5'-3"	8'-3"	6'-4"
8	7'-10"	6'-0"	9'-5"	7'-3"
9	8'-8"	6'-9"	10'-5"	8'-2"
10	9'-8"	7'-6"	11'-8"	9'-0"
11	10'-8"	8'-3"	12'-10"	9'-11"

GRADE 60 REINFORCEMENT. MINIMUM LENGTHS SHOWN ABOVE SHALL BE USED UNLESS OTHERWISE NOTED ON THE PLANS. "TOP" BARS ARE HORIZONTAL BARS PLACED SUCH THAT MORE THAN 12 INCHES OF FRESH CONCRETE IS CAST IN THE MEMBER BELOW THE BAR.