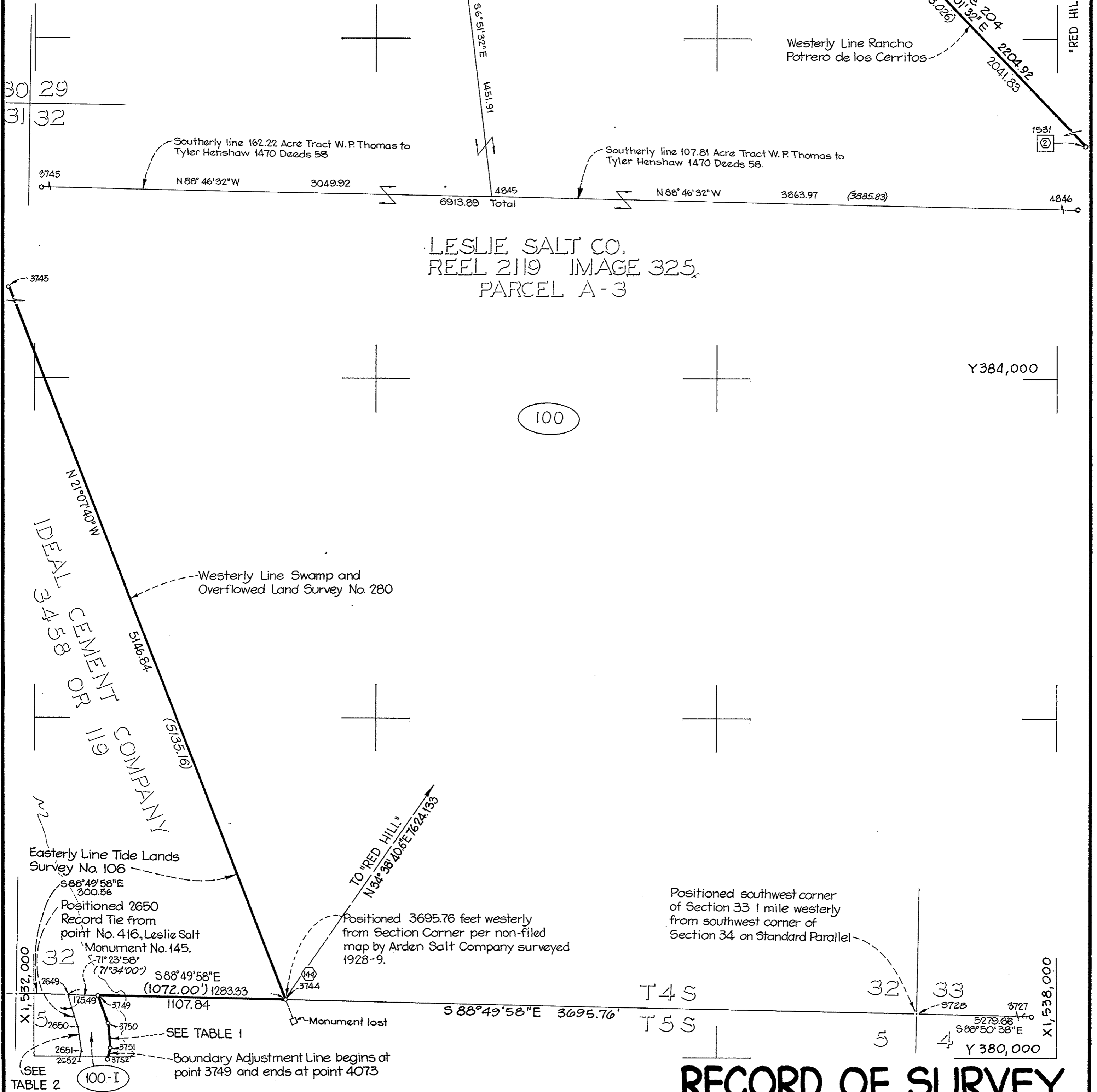


PT. NOS.		SURVEYED DATA		RECORD GRID DATA WHERE APPLICABLE
FROM	TO	BEARING	DIST.	
3752	3751	N 11° 55' 56" E	72.60	TABLE 1
3751	3750	N 07° 47' 00" W	140.30	
3750	3749	N 13° 26' 00" W	170.30	
3749	3744	S 88° 49' 58" E	1107.84	
3749	2649	N 88° 49' 58" W	175.49	TABLE 2
2649	2650	S 18° 26' 00" E	193.46	
2650	2651	S 07° 47' 00" E	140.30	
2651	2652	S 11° 55' 56" W	72.60	
				123.3

COORDINATES, DISTANCES, AND BEARINGS SHOWN ARE ON THE CALIFORNIA COORDINATE SYSTEM ZONE 3. MULTIPLY RECORD, DEED OR SURVEYED DISTANCE BY 1.0000650 TO OBTAIN GROUND LEVEL DISTANCE.

RECORD GRID DATA IS SHOWN IN PARENTHESIS



RECORD OF SURVEY

PORTIONS OF: T4S R2W, T5S R1W, T5S R2W
T6S R1W AND T6S R2W M.D.M.

FOR

THE UNITED STATES DEPARTMENT OF THE INTERIOR
FISH & WILDLIFE SERVICE
(San Francisco Bay National Wildlife Refuge)

PORTIONS OF THE CITIES OF SAN JOSE, FREMONT & NEWARK
IN ALAMEDA COUNTY & SANTA CLARA COUNTY
STATE OF CALIFORNIA

SCALE: 1" = 400'

SURVEYED BY: NOVEMBER 1975
MURRAY - MCCORMICK, INC.
OAKLAND, CALIFORNIA

SHEET 9 OF 57 SHEETS

BASIS OF BEARINGS: THE LINE BETWEEN MONUMENTS ALLISON AND MT. DIABLO
TAKEN AS N4°13'56.2"W, AS SHOWN ON SHEET 3

ANGLE TAKEN AT POINT NO. 3744 $\theta = -0^\circ 59' 06''$

LEGEND

- ① SET 3/4" IRON PIPE WITH STAMPED R.R. SPIKE
- FD. STD. N.G.S. MONUMENT
- FD. AS NOTED
- TRACT NUMBER
- ② CAST ALUMINUM MON. IN 4 1/4" x 4 1/4" POST
- ③ CAST ALUMINUM MON. (SEE MON. DETAILS SHEET 4)
- DIMENSIONAL POINT WITH NUMBER
- FD 4 1/2" x 4 1/2" LESLIE SALT REINFORCED CONC. MON.
- RBG. RADIAL BEARING

6	7				
8	9	10			
11	13	15			
17	20	22	24	25	
26	27	28	30	31	33
36	37	39	40	47	49
	51	52	53		

SHEET
INDEX

1819-032-5P

AUG 27, 1976 #5396530 BOOK 378 & MAPS PAGES 1 thru 57